

GIANFRANCO  
FERRE

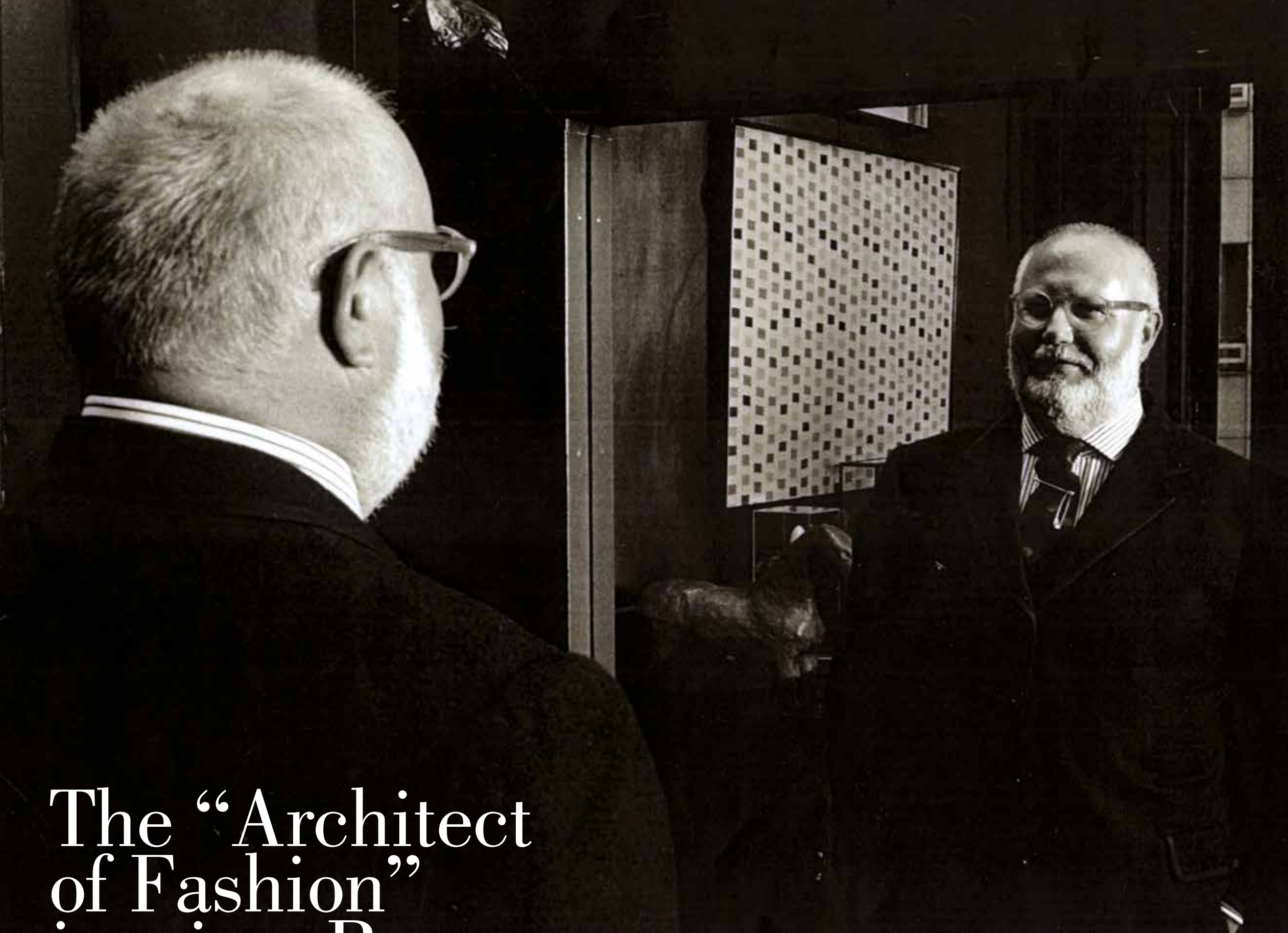
GIANFRANCO  
FERRE

A COLLECTION OF EXCLUSIVE BESPOKE RUGS

The design of a dress, furniture, a house, a room,  
a street and a city are all the same process.

Gianfranco Ferré

GIANFRANCO  
**FERRE**



The “Architect  
of Fashion”  
inspires Rugs.



La moda di Gianfranco Ferré è come una sintesi di suggestioni ed emozioni in un linguaggio di segni e forme, colori e materiali. La sua ricerca costante è finalizzata ad un equilibrio che trae dalla ricchezza della tradizione gli stimoli per inventare, innovare e sperimentare.

Il suo stile è caratterizzato da una forte identità e da un intento di coinvolgimento globale. La sua Opera rimanda a culture ed esperienze differenti che riduce le distanze ed è volta ad annullare i confini. Era soprannominato l'Architetto, per via della sua laurea, ma soprattutto perchè per lui ogni abito non era solamente una creazione artistica ma un vero e proprio progetto. Sulla scia di questi concetti SAHRAI ha elaborato una Collezione di Tappeti dove forme e colori continuano ad evocare l'opera immortale di un grande Designer Italiano. L'esclusività dei materiali e la raffinatezza delle lavorazioni danno vita ad una Collezione che incontra le dinamiche più contemporanee del vivere moderno.





The Style of Ferré is a mixture of suggestions, signs and forms, colors and materials. There is a constant search for a balance which takes inspirations from the rich tradition in terms of inventing and innovating. His style is also characterized by a strong identity that involves the world of Design. Everything leads to different cultures and experiences, which seem to reduce distances and cancel boundaries. He was nicknamed the Architect, because of his degree and he wanted to be recognized as such because an outfit, for him, was not just an artistic creation but a real project. On the trail of these concepts SAHRAI has developed a Collection of Rugs where shapes and colors continue to evoke the immortal work of a distinguished Italian Designer. This Collection blends to the most contemporary life and thanks to the exclusiveness of the materials and the finest handmade work processes becomes a precious homage to one of the greatest fashion figure of all times.

费雷的风格将暗示、标志和形式、色彩和材料融合在一起。这是一个在发明和创新方面从丰富的传统中摄取灵感，不断寻求平衡的过程。其设计领域的强大地位也为其风格赋予了特色。一切事物都具有不同的文化和经历，这似乎能够缩短距离，并打破界限。由于他的地位以及他希望被人们所认同，因此人们昵称他为“缔造者”，因为对于他而言，服装不仅仅是一次艺术创作，还是一个真实的项目。根据这一系列理念，SAHRAI 已开发出一系列地毯，其外形、颜色使之不断赢得杰出意大利设计师的不朽作品的声誉。此系列与最现代的生活方式融为一体，这要归功于独特的材料、以及向有史以来最伟大的时尚大师之一表达崇高敬意的最精制的手工作业流程。



Стиль Gianfranco Ferré представляет собой синтез воспоминаний и эмоций на языке знаков и форм, цветов и материалов. Его постоянные исследования, направленные на поиск баланса и наполненные богатыми традициями, создают стимулы для того чтобы изобретать, внедрять инновации и экспериментировать. Его стиль характеризуется ярко выраженной индивидуальностью и дает ощущение глобального участия. Его Шедевры относятся к разным культурам и многогранному профессиональному опыту, который уменьшает расстояния и стирает границы. Его переименовали в Архитектор, благодаря полученному образованию, но в первую очередь благодаря тому, что для него каждое платье было не только художественное творчество, но и профессиональный проект. Следуя данной концепции SAHRAI разработала Коллекцию Ковров, где формы и цвета продолжают вызывать бессмертное произведение итальянского Дизайнера. Эксклюзивность материалов и изысканность обработки отвечают самым динамичным требованиям современной жизни.





A  
COLLECTION  
OF  
EXCLUSIVE  
BESPOKE  
RUGS







Design: Helix Gold - Handknotted in wool and silk and silk relief



Design: Obsidian Gold - Handknotted in wool and silk and silk relief





Design: Pentelic - Handknotted in loop wool and silk relief



Design: Delta Silver - Handknotted in wool and silk relief









Design: Matrix - Superior Handtufted in wool and silk relief

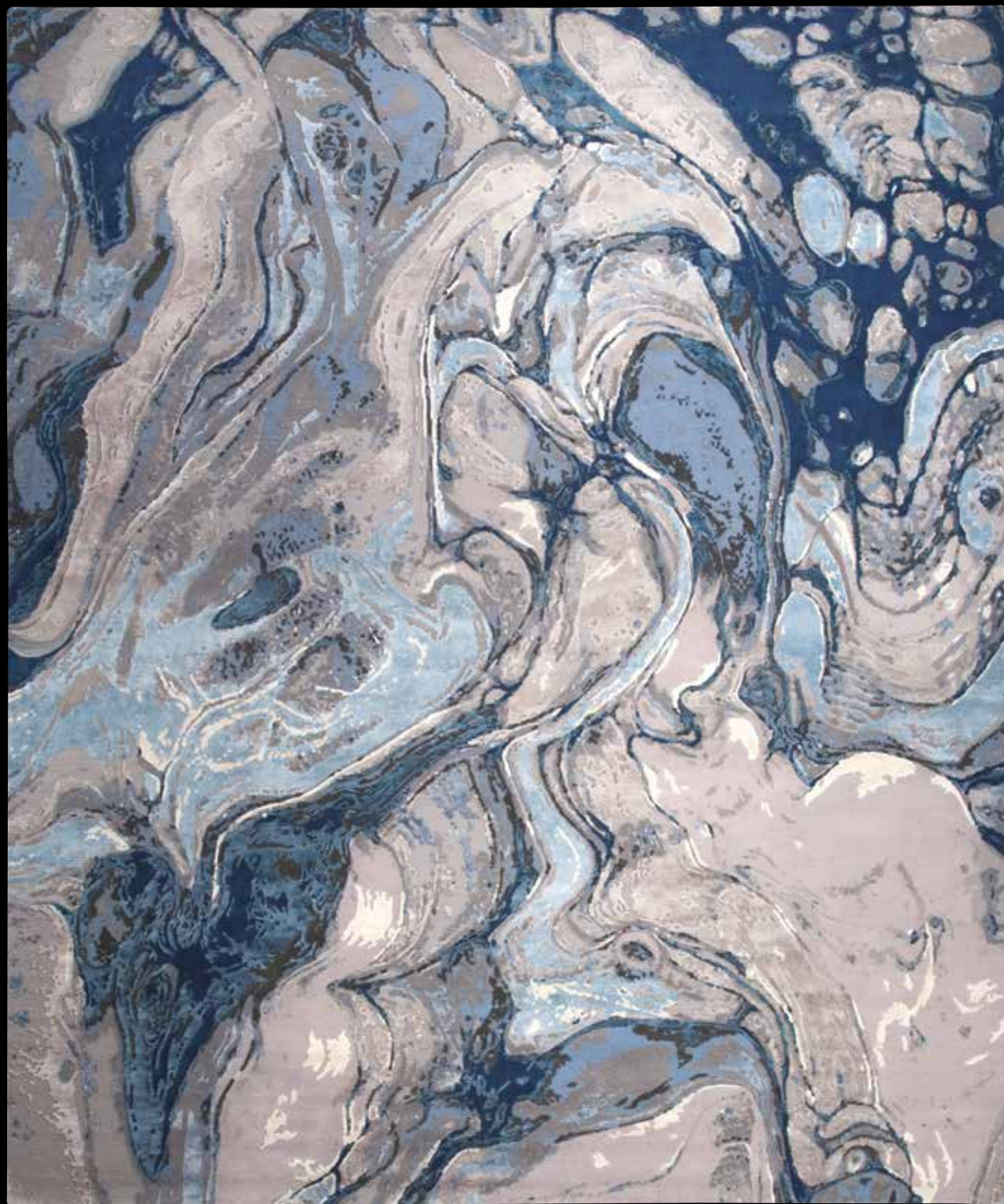


Design: Urban - Superior Handtufted in wool and silk relief









Design: Obsidian - Handknotted in loop wool and silk relief



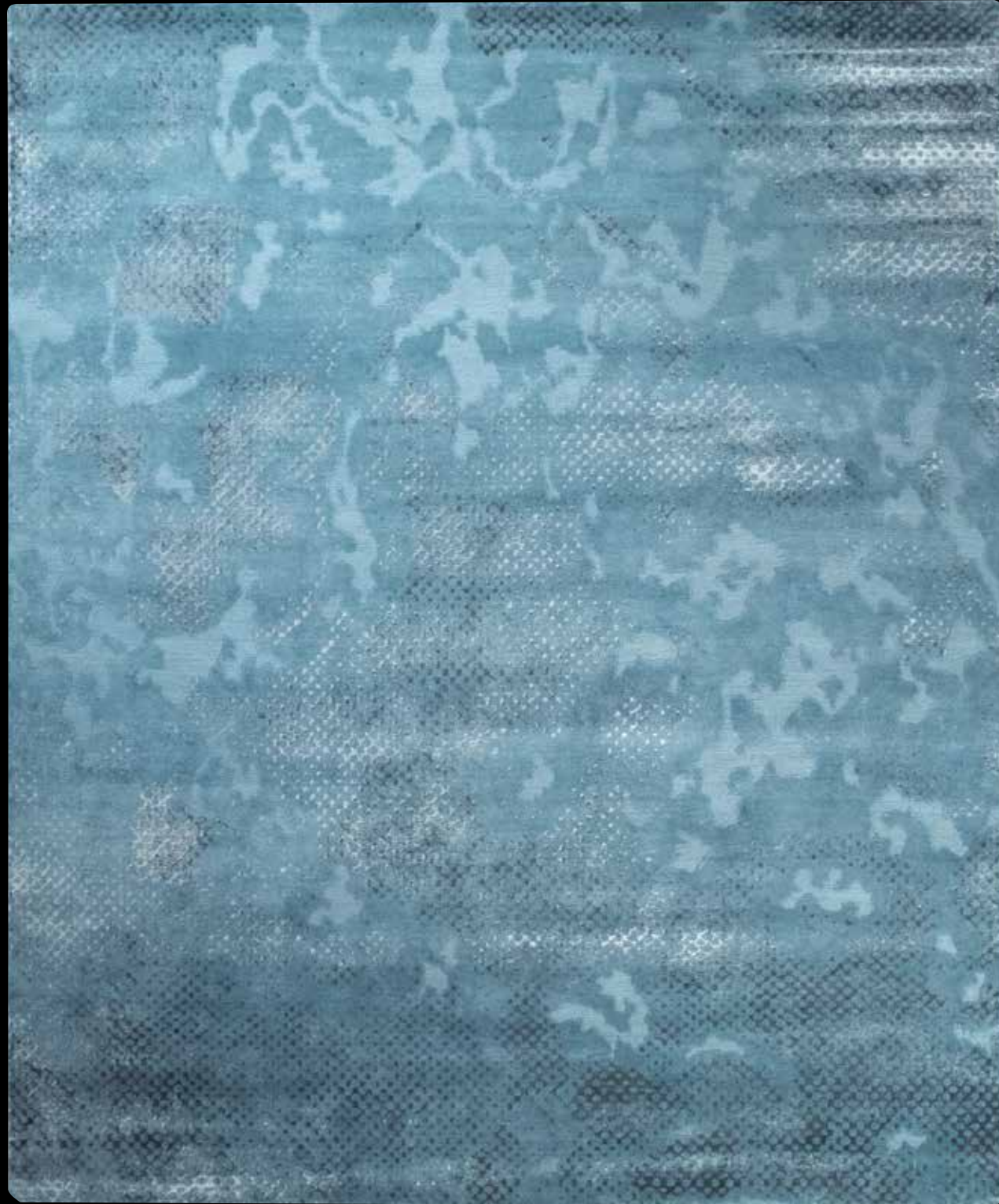
Design: Helix - Handknotted in wool and silk relief





Interior Design by Gérard Faivre Paris  
Helix - Superior Handtufted in wool and silk relief

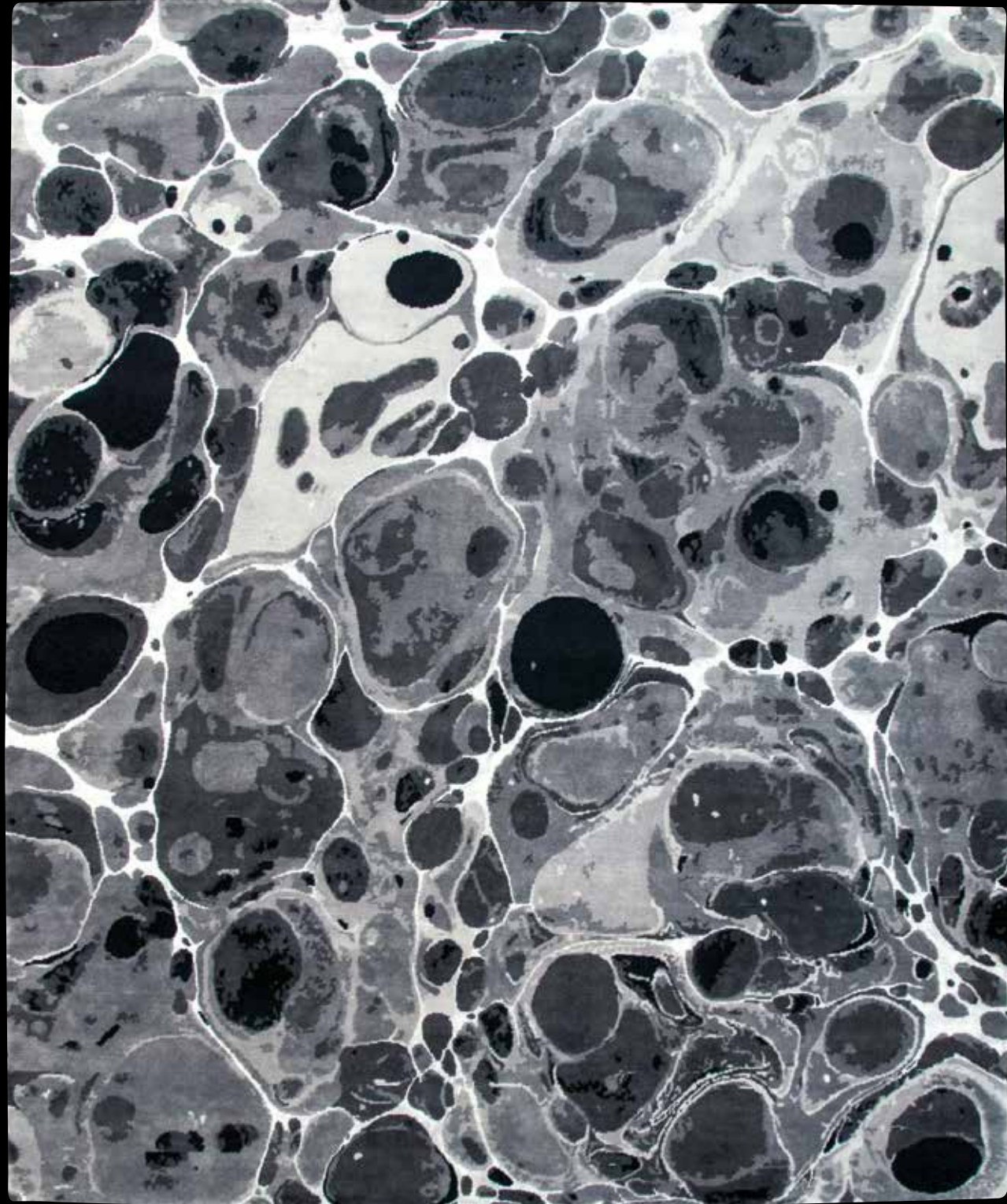




Design: Silica - Handknotted in wool and silk relief







Design: Marbleous - Handknotted in wool and silk





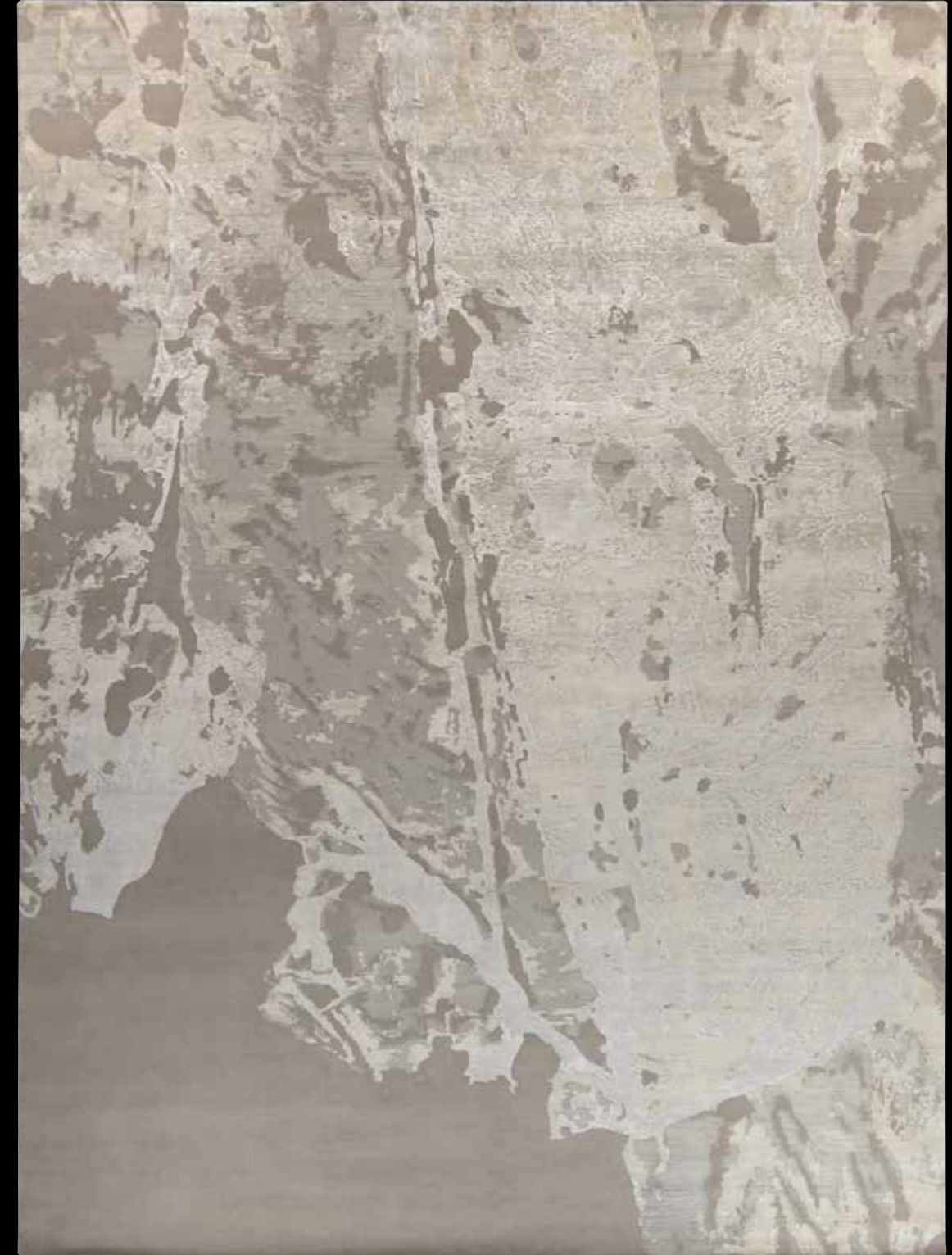


Interior Design by Gérard Faivre Paris  
Marbleous - Superior Handtufted in wool and silk





Design: Reverse - Handknotted in wool and silk and silk relief



Design: Reverse Ivory - Handknotted in wool and silk and silk relief





Design: Plasma - Handknotted in wool and silk and silk relief



Design: Magnet - Handknotted in wool and silk and silk relief



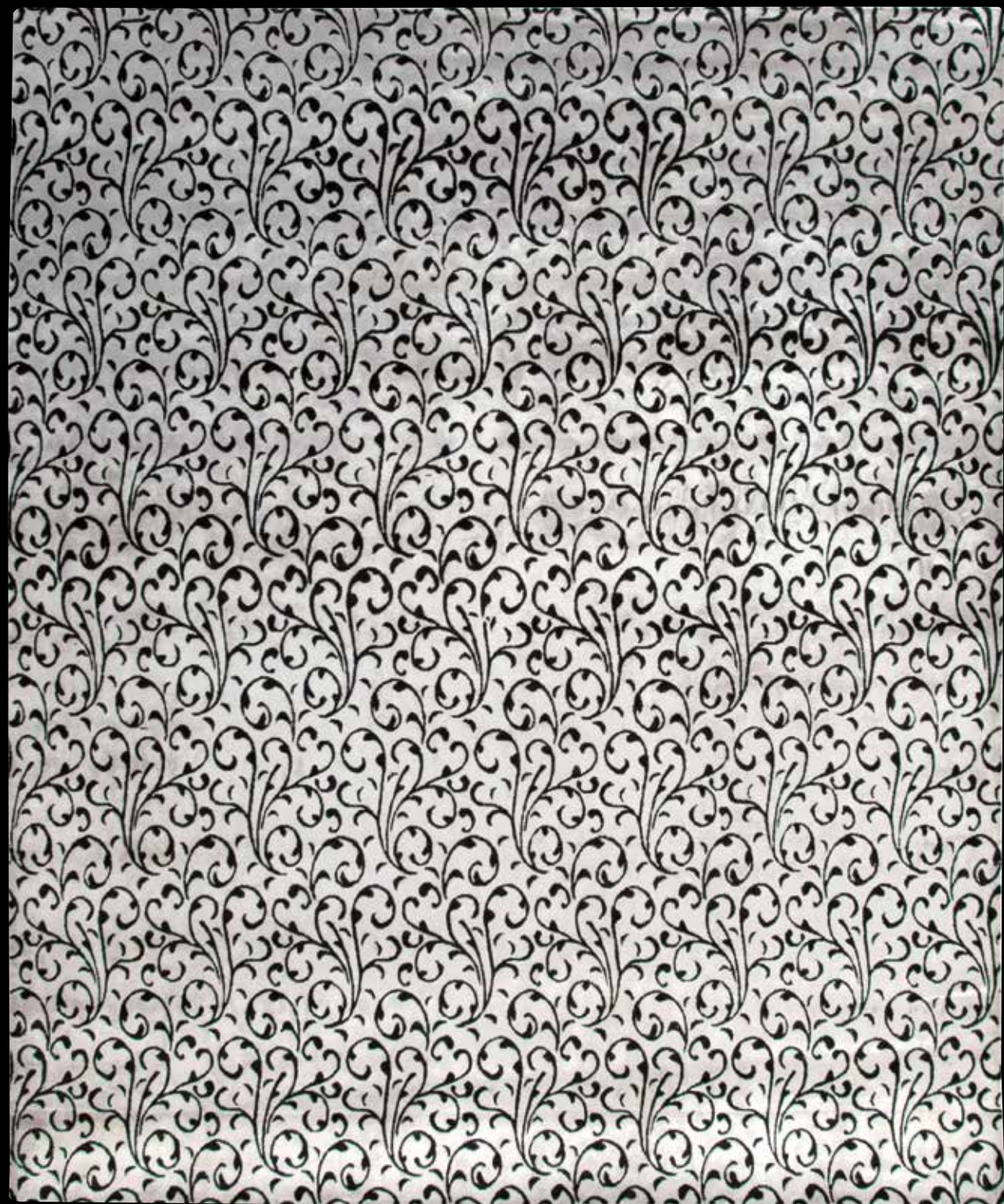


Design: Helix Powder Pink - Handknotted in wool and silk and silk relief



Design: Obsidian Powder Pink - Handknotted in loop wool and silk relief





Design: Fourleaf - Handknotted in silk and wool relief







Design: Interlude - Superior Handtufted in wool and silk relief



Design: Kharma - Superior Handtufted in wool and silk relief





Design: Kharma - Superior Handtufted in wool and silk relief





Design: Fate - Handknotted in silk and silk relief





Design: Spear - Superior Handtufted in wool and silk relief



Design: Gate - Superior Handtufted in wool and silk relief



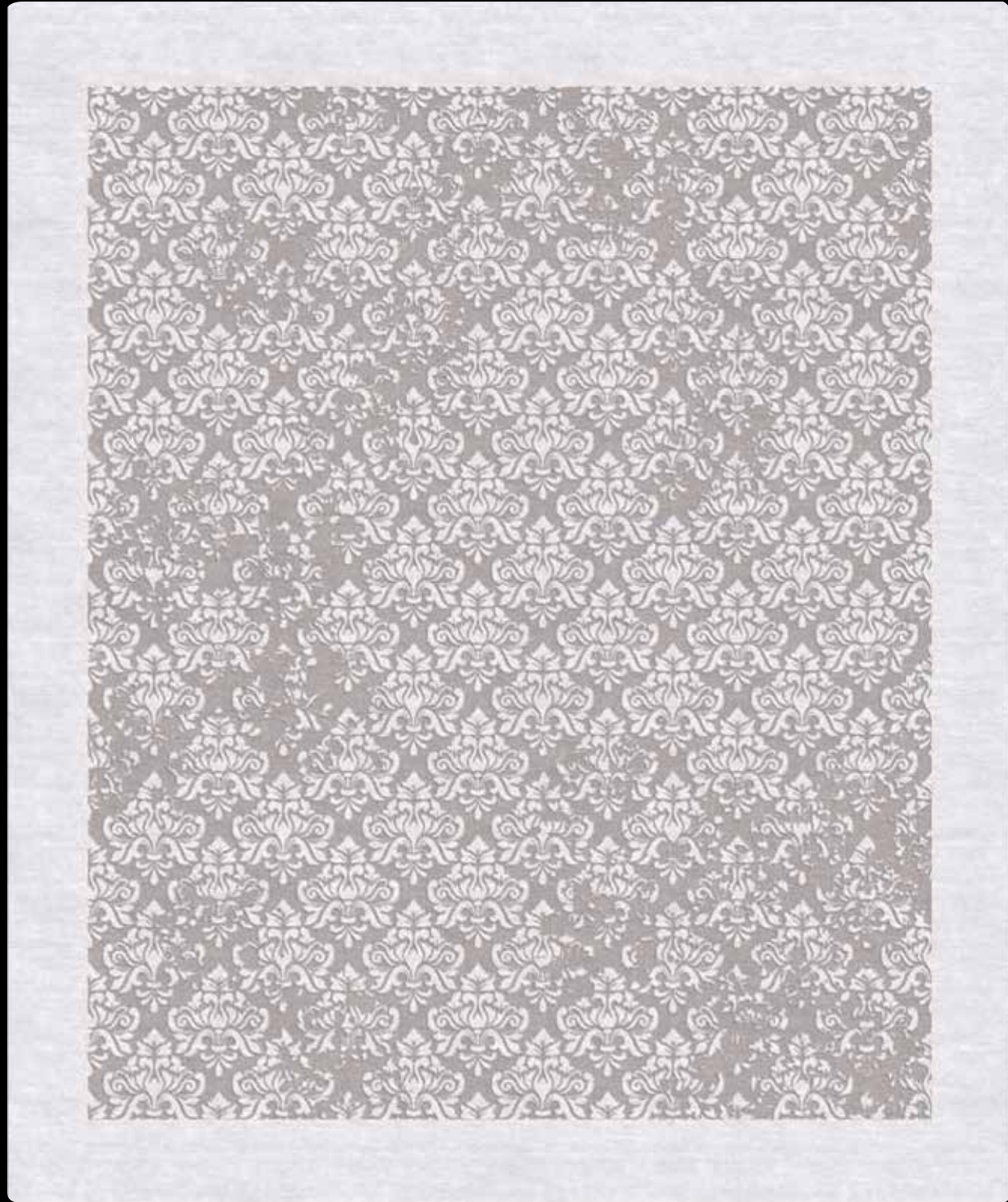


Design: Waves - Handknotted in wool and silk and silk



Design: Rings - Handknotted in silk and wool relief





Design: Beverly - Handknotted in wool and silk relief









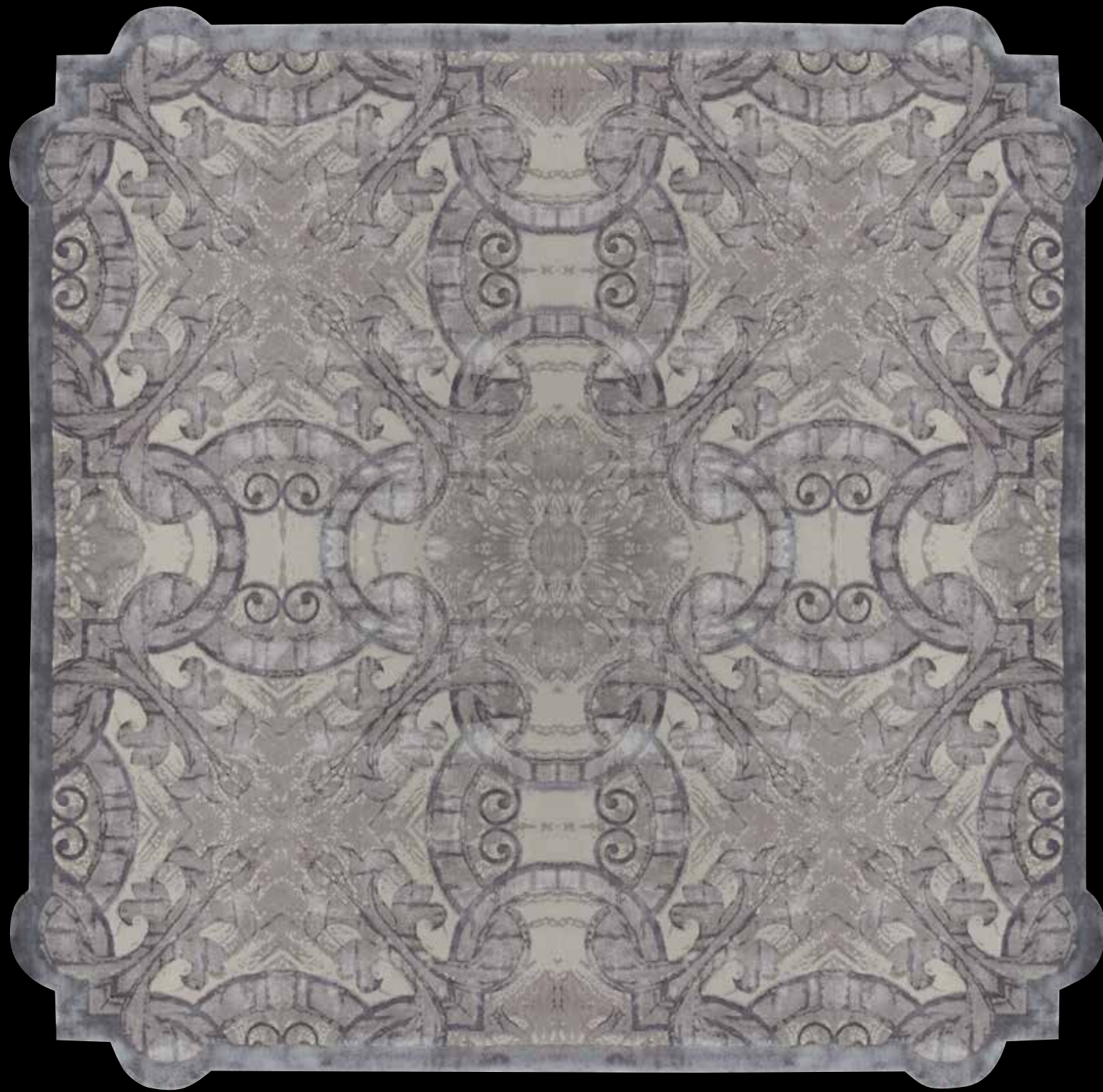


Design: Graceful - Handtufted in wool and silk relief



Design: Chandelier - Handknotted in wool and silk





Design: New Romance - Superior Handtufted in wool and silk

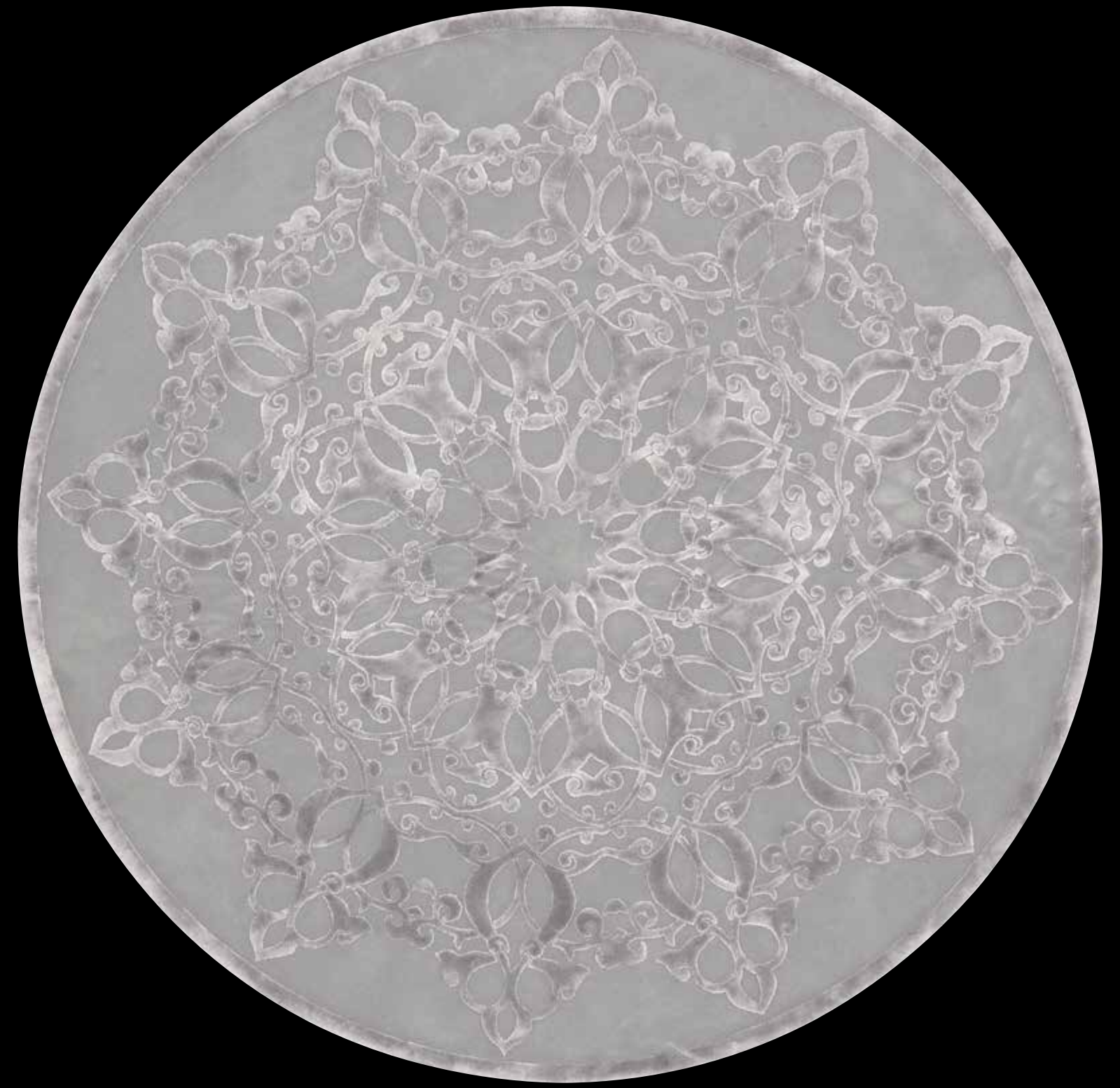


Design: Romance - Superior Handtufted in all silk



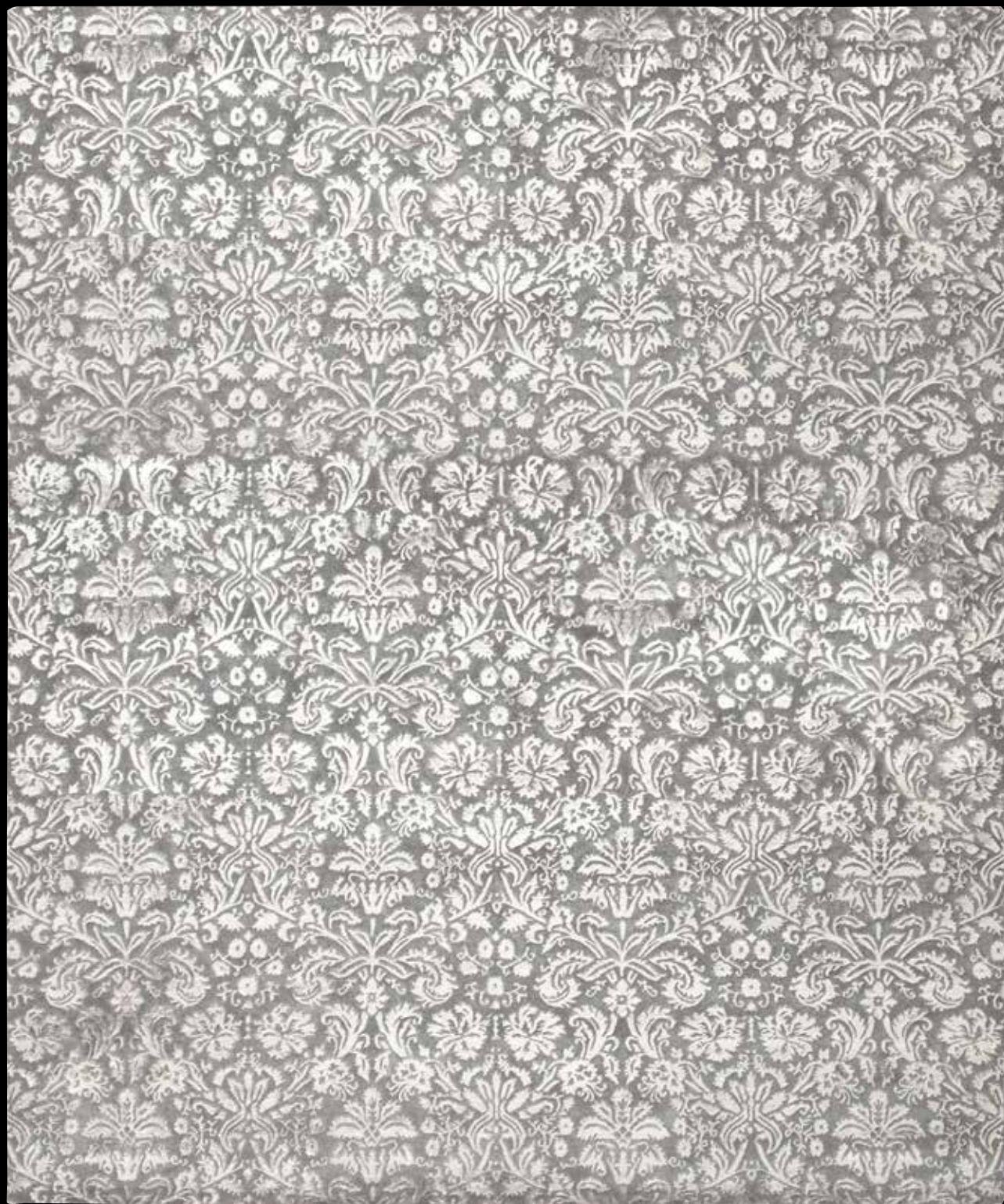


Design: Daydream - Superior Handtufted in silk and wool relief



Design: Garland - Superior Handtufted in wool and silk relief





Design: Damascus - Handknotted in wool and silk relief





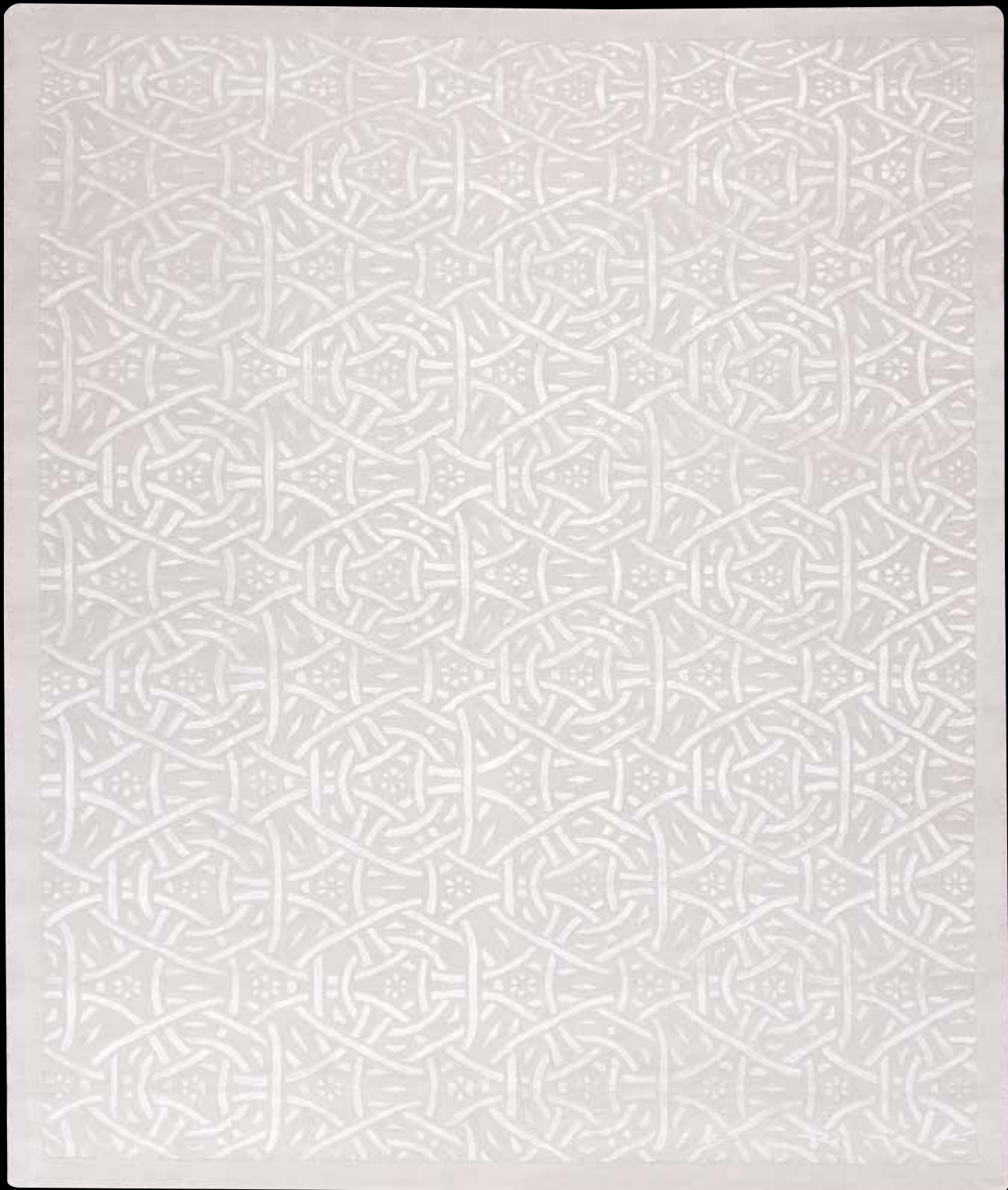


Design: Windy - Handknotted in all silk

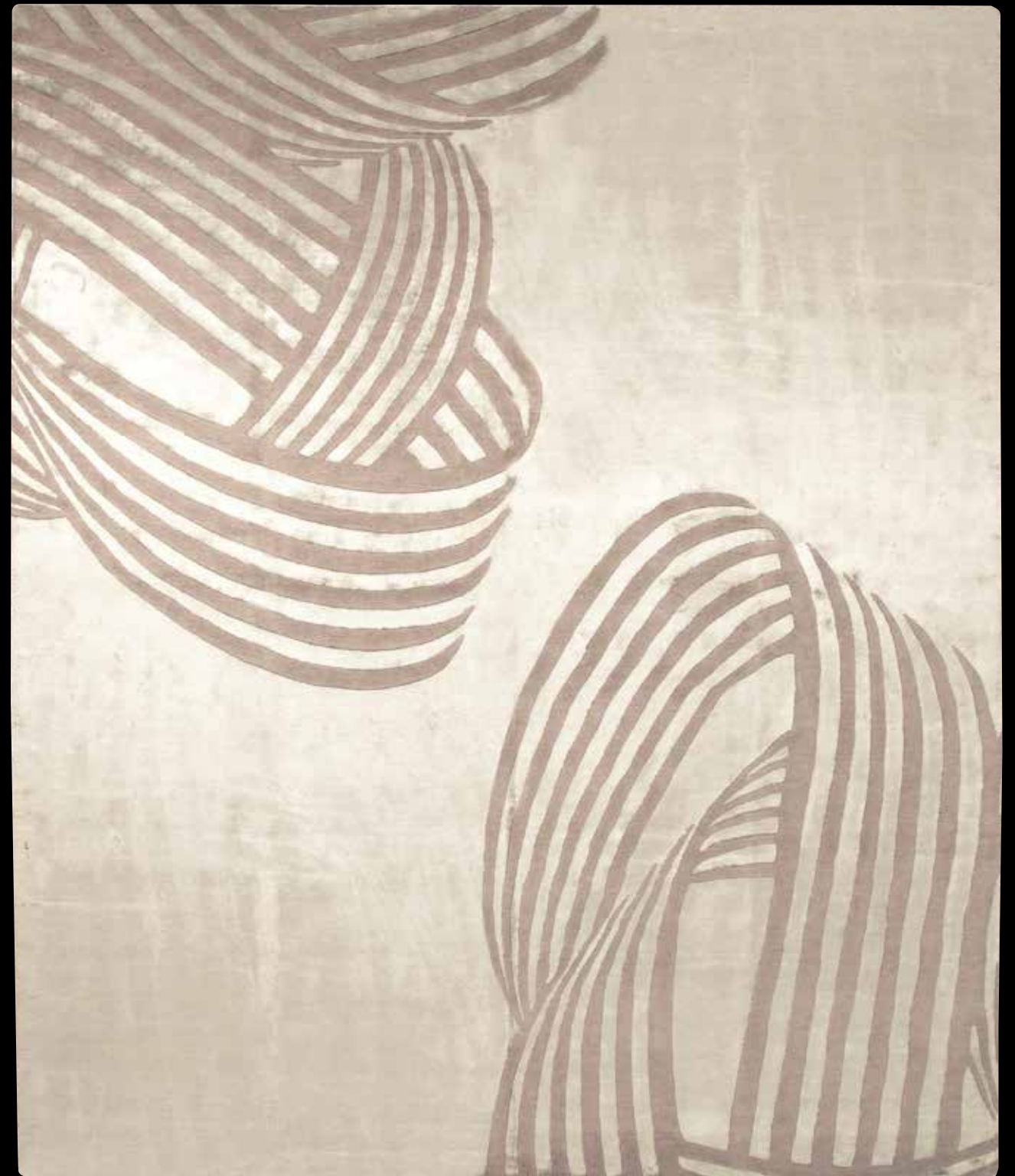


Design: Zebrine - Handknotted in wool and silk relief





Design: Hoop - Handknotted in wool and silk relief

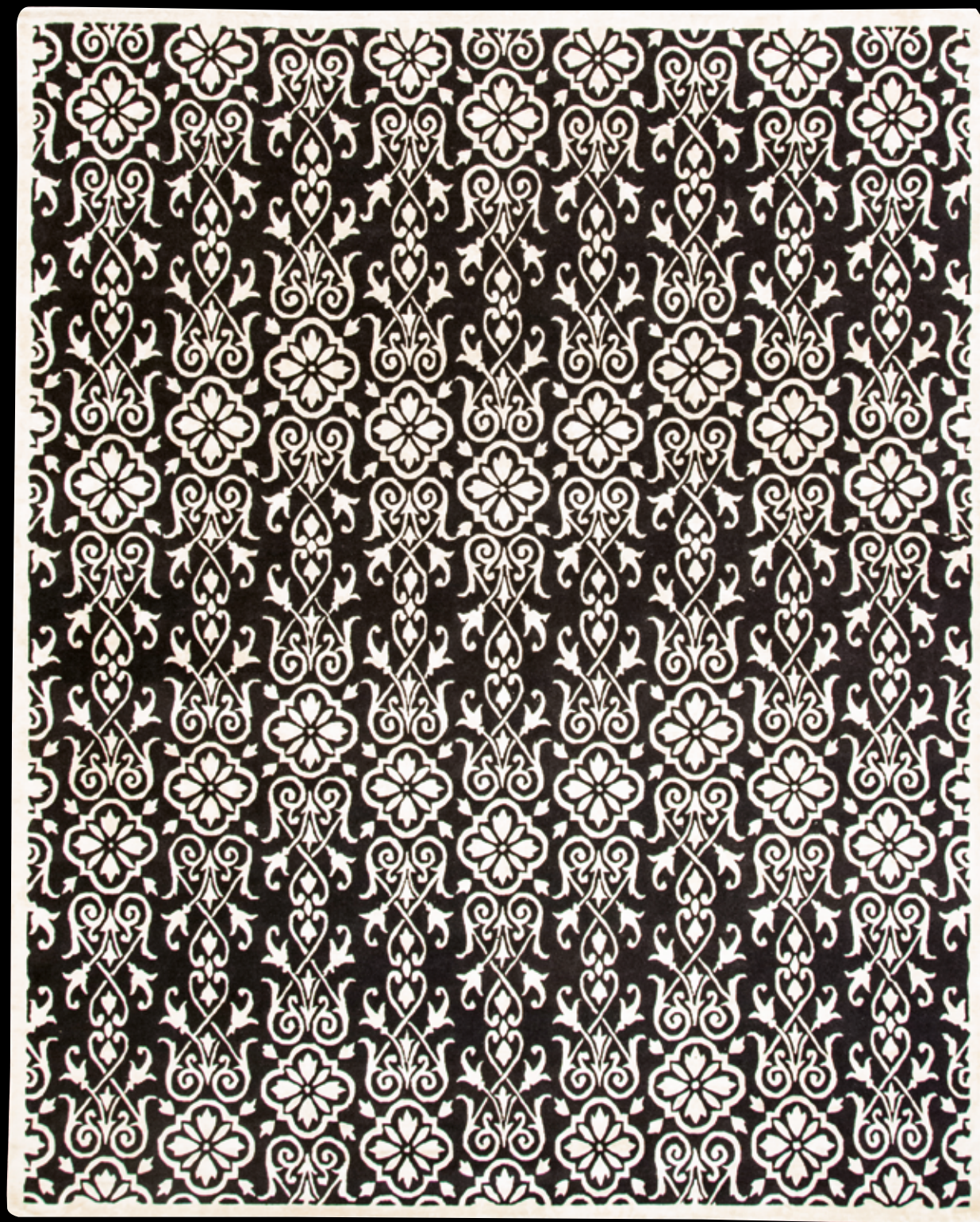


Design: Bow - Handknotted in silk and wool relief

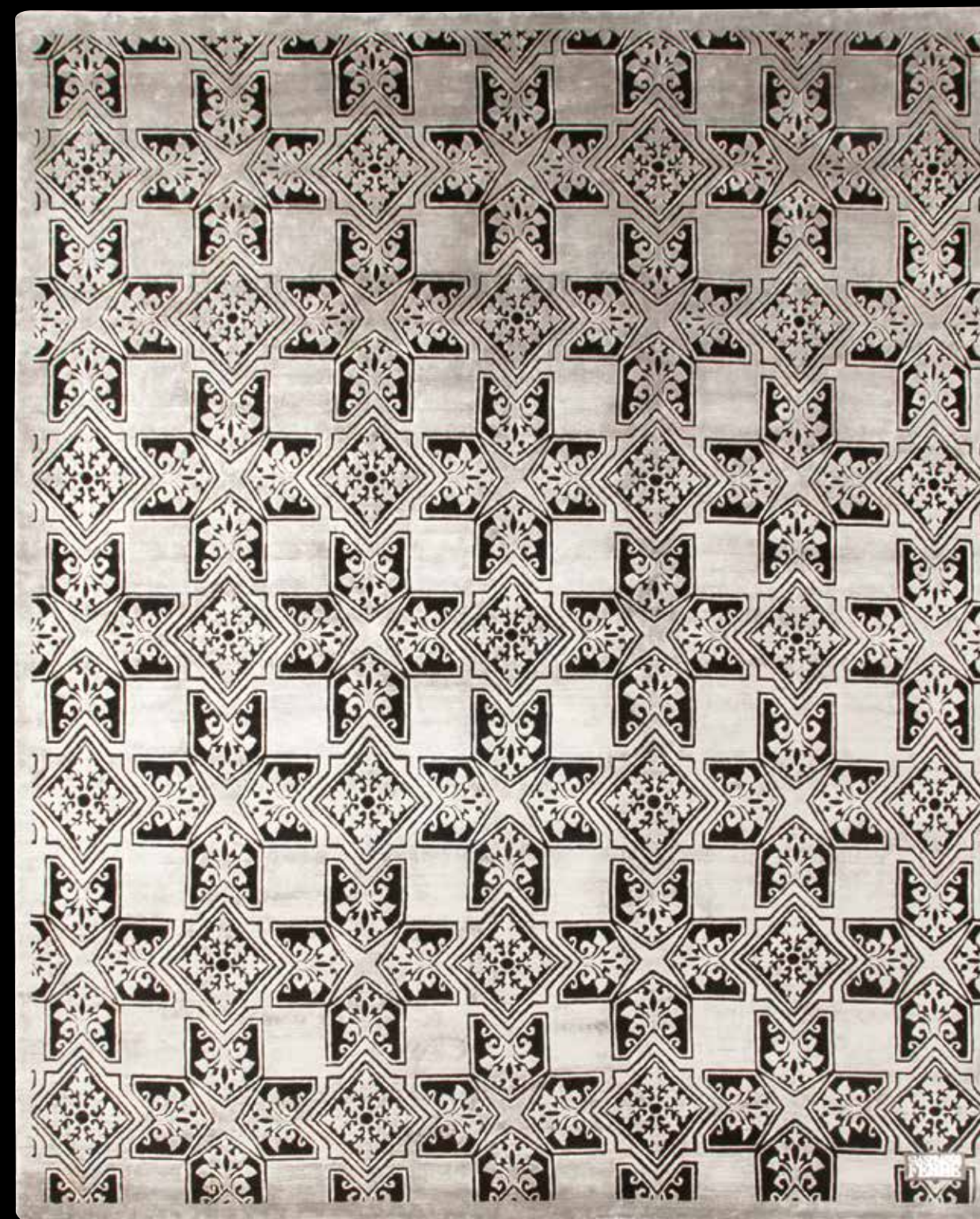






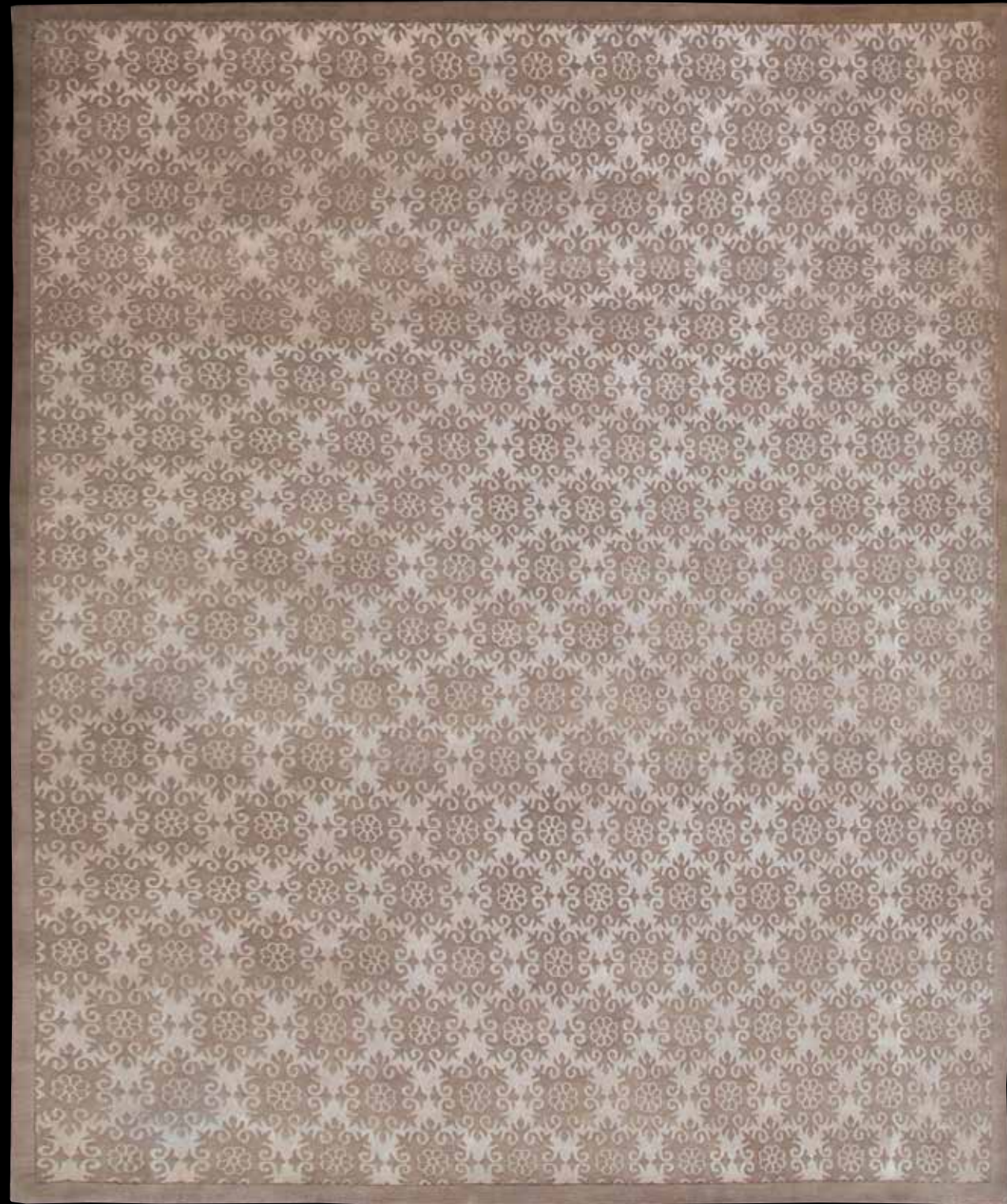


Design: Ivy - Handknotted in wool and silk relief

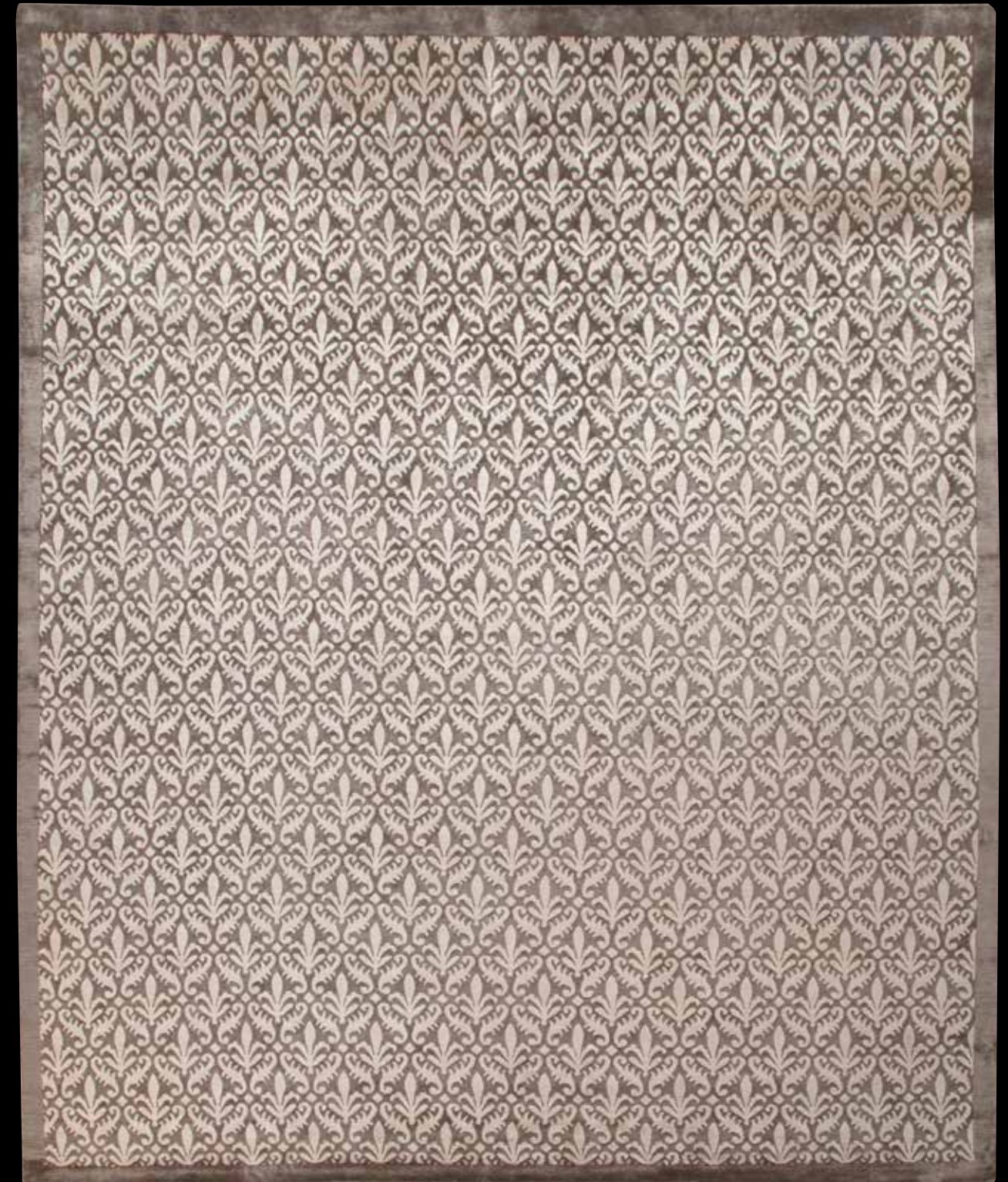


Design: Crown - Handknotted in wool and silk relief





Design: Desert Rose - Handknotted in wool and silk and silk relief



Design: Lily - Handknotted in silk and silk relief

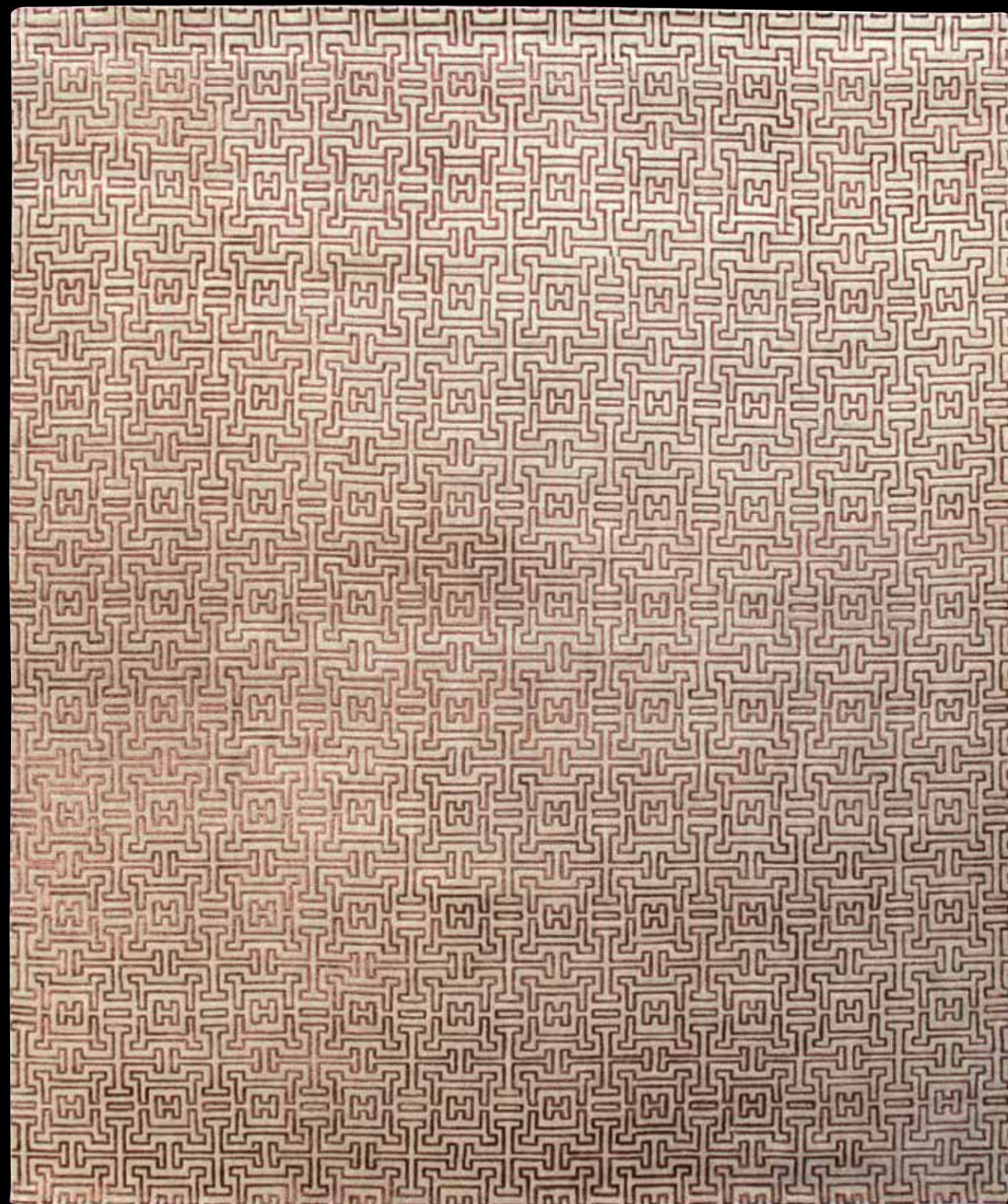




Design: Phoenix - Handknotted in silk and silk relief







Design: Escape - Handknotted in wool and silk and silk relief



Design: Pyramid - Handknotted in wool and silk relief



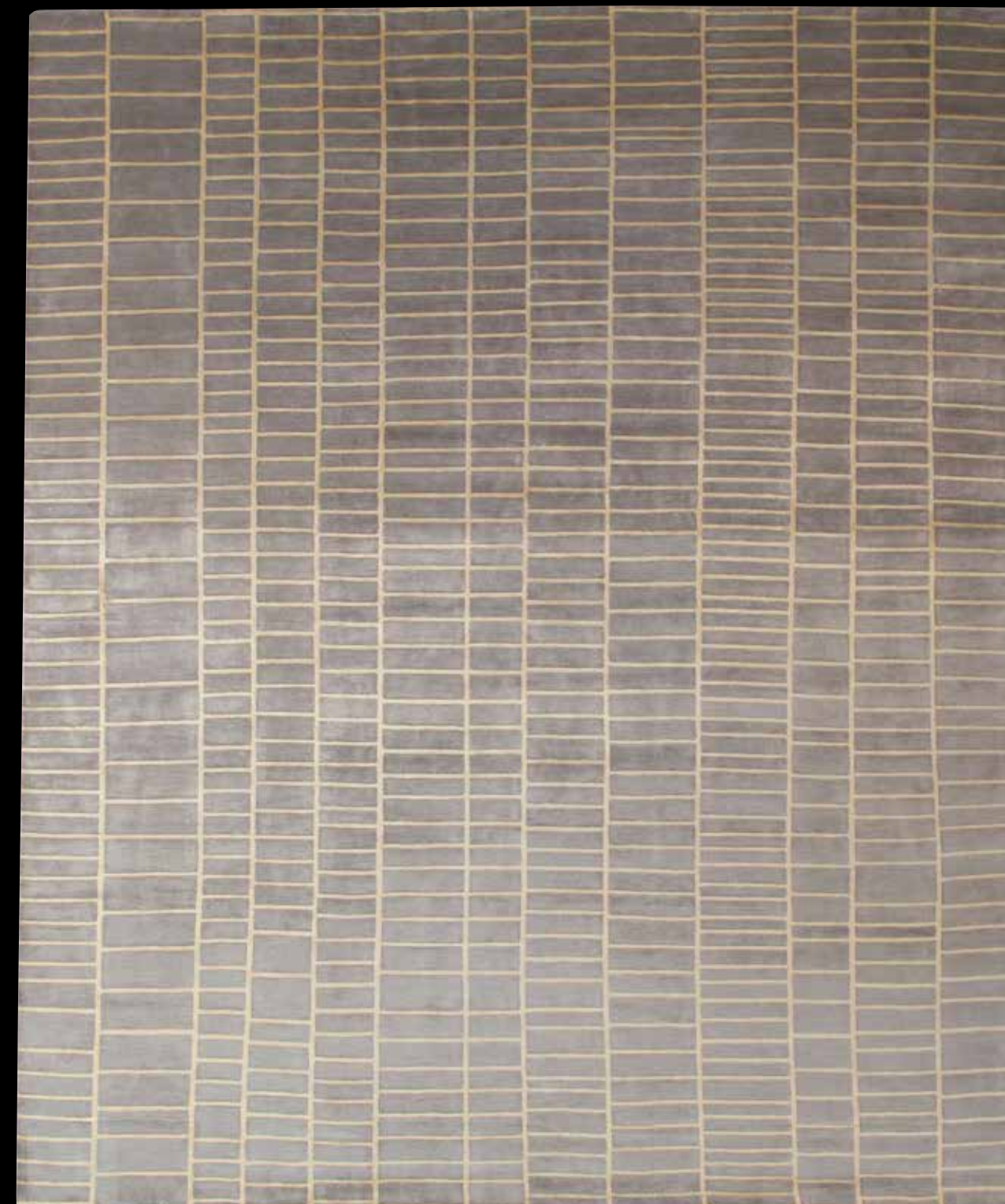


Design: GFF Arbor



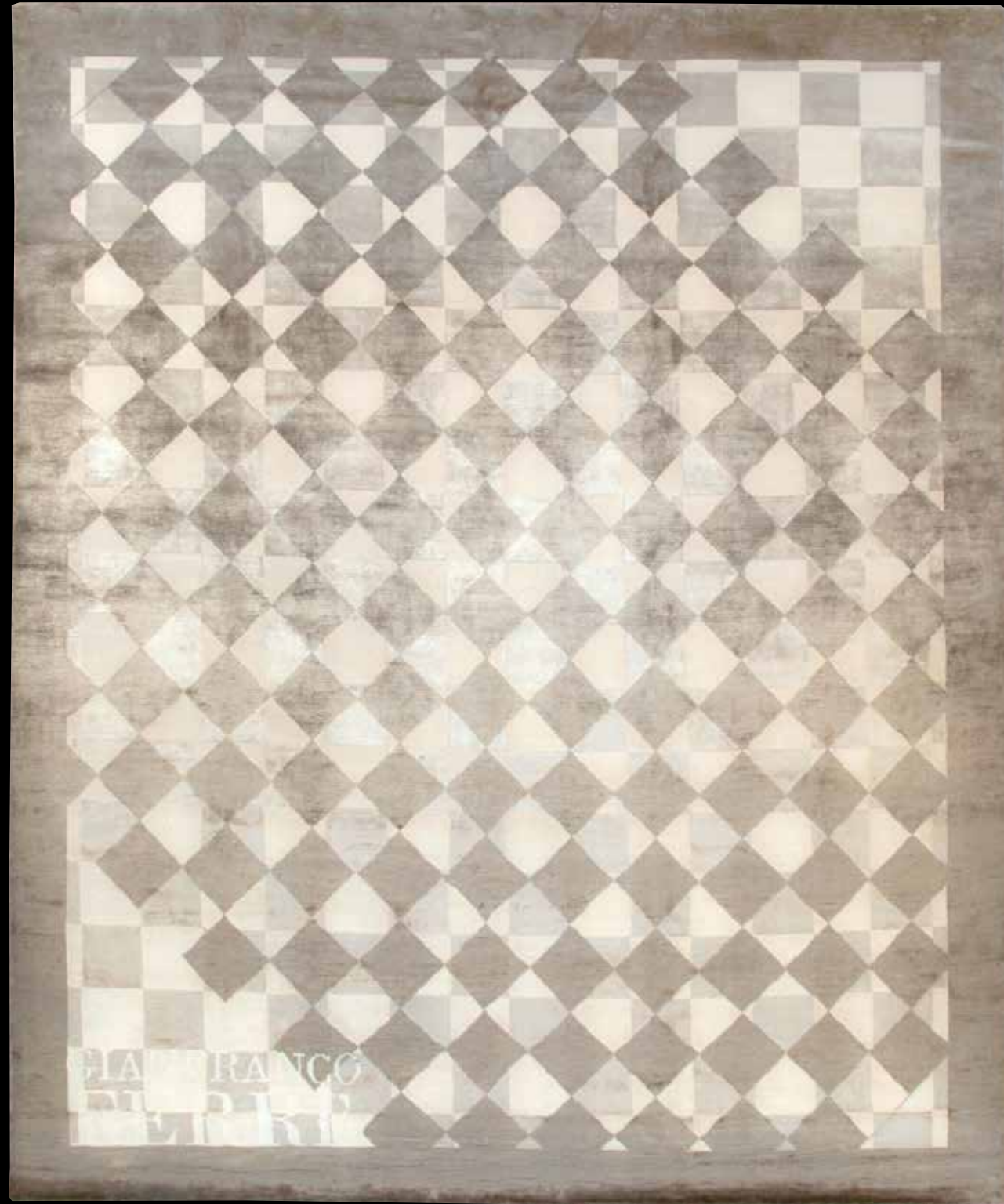


Design: Doodle - Handknotted in wool and silk relief



Design: DNA - Handknotted in silk and silk relief





Design: Rubik - Handknotted in wool and silk

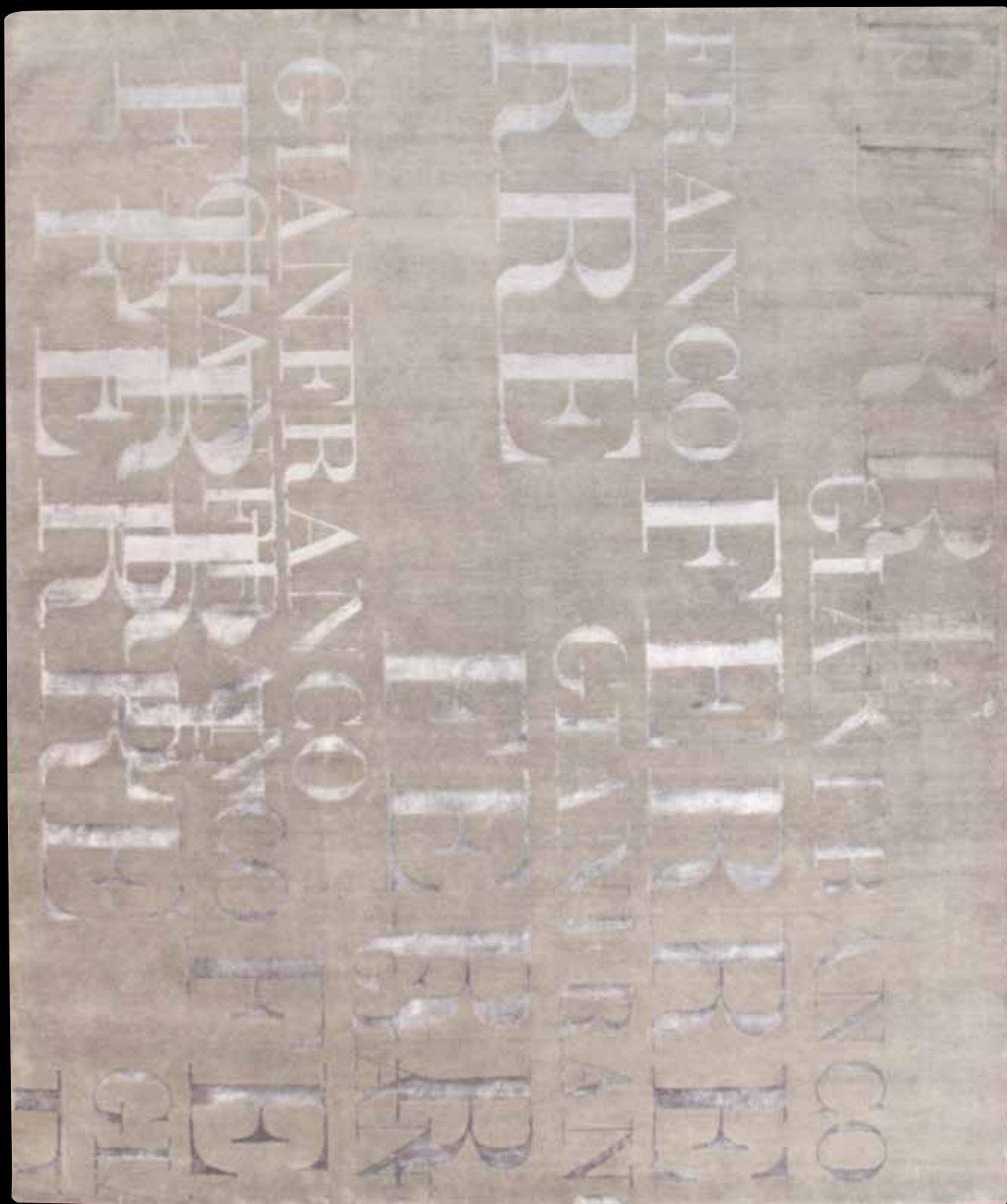


Design: GFF Arbor - Superior Handtufted in wool and silk relief









Design: GFF Two - Handknotted in wool and silk

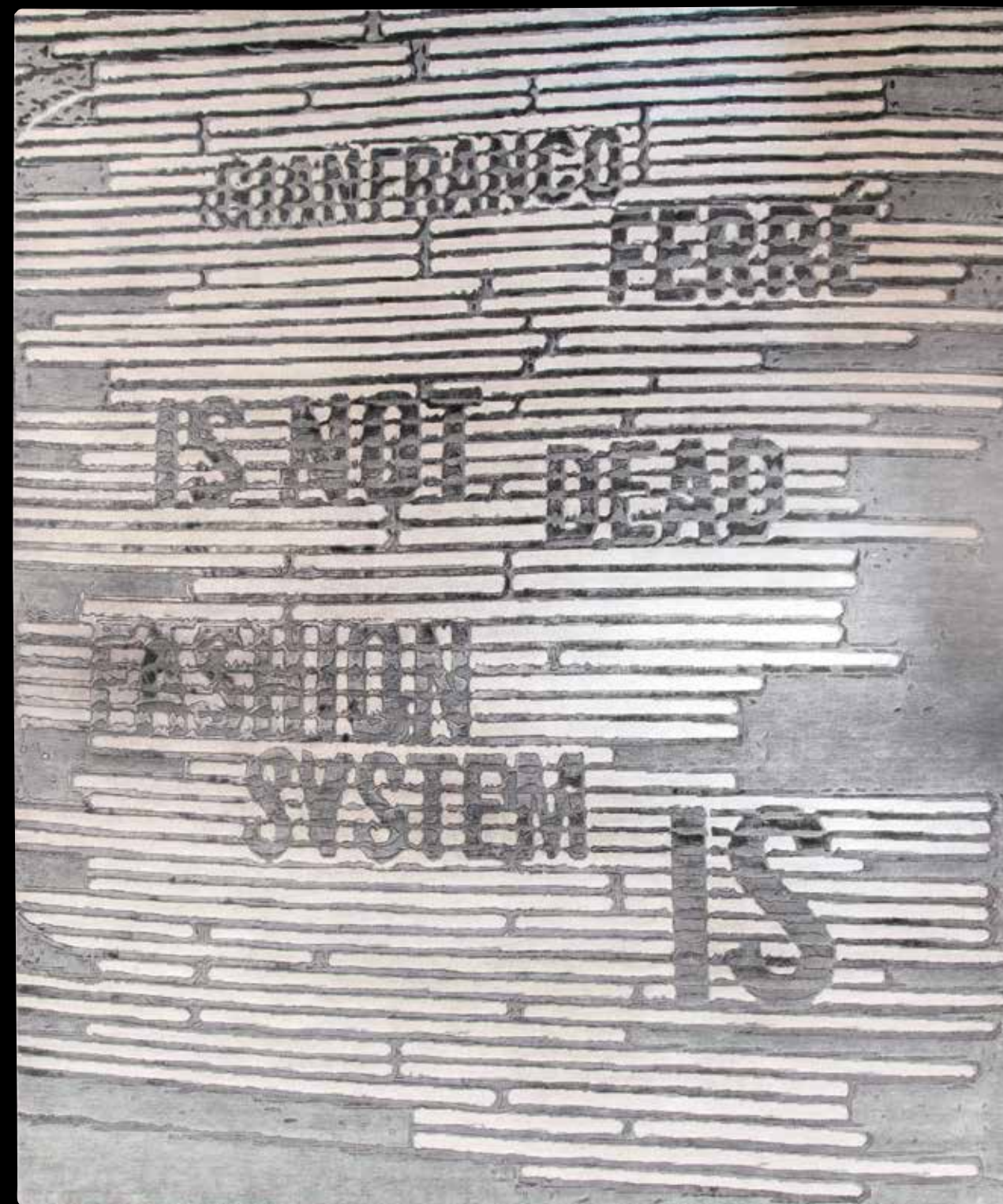


Design: GFF One - Handknotted in wool and silk



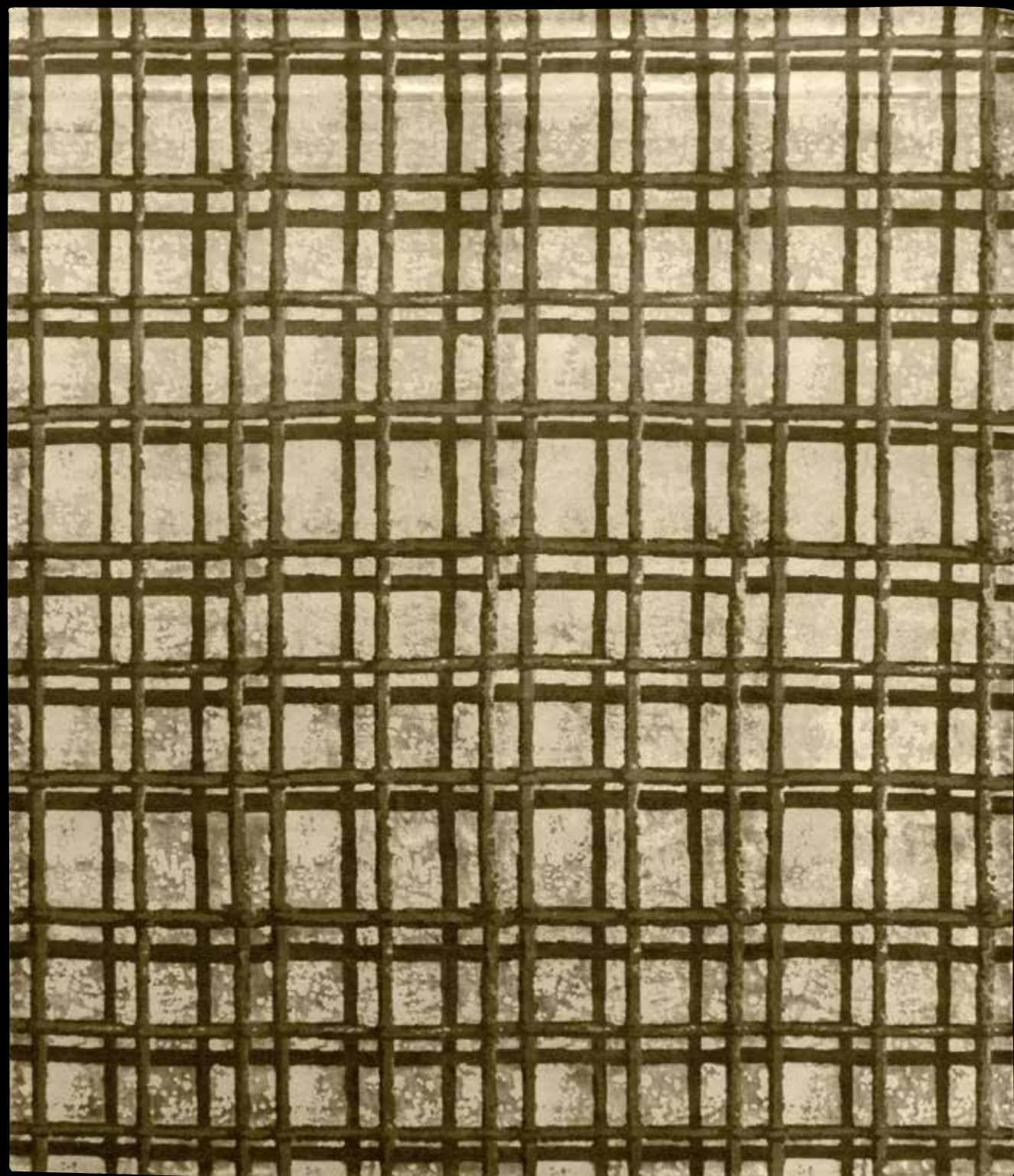


Design: Concrete - Handknotted in wool and silk

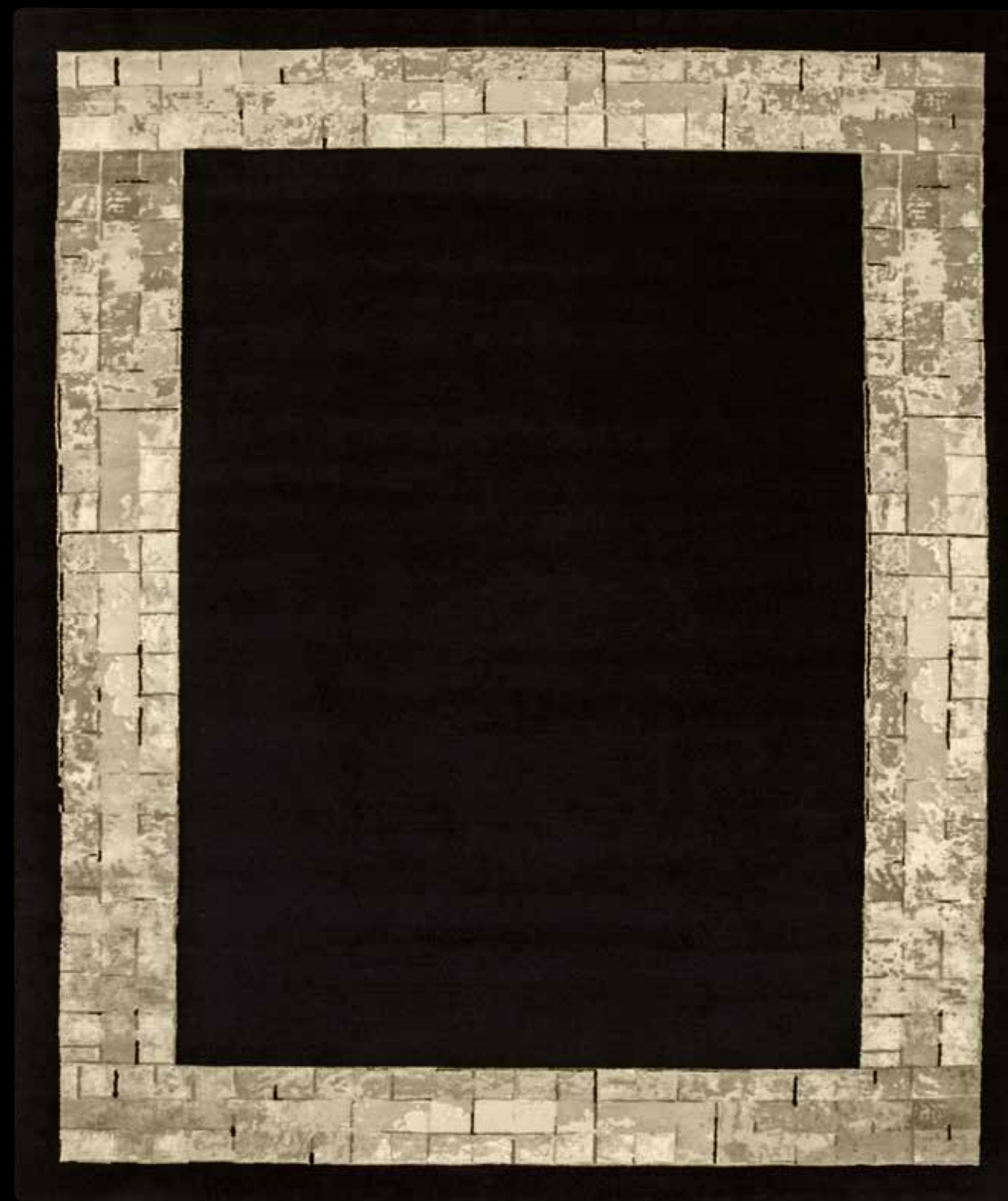


Design: System - Handknotted in wool and silk relief



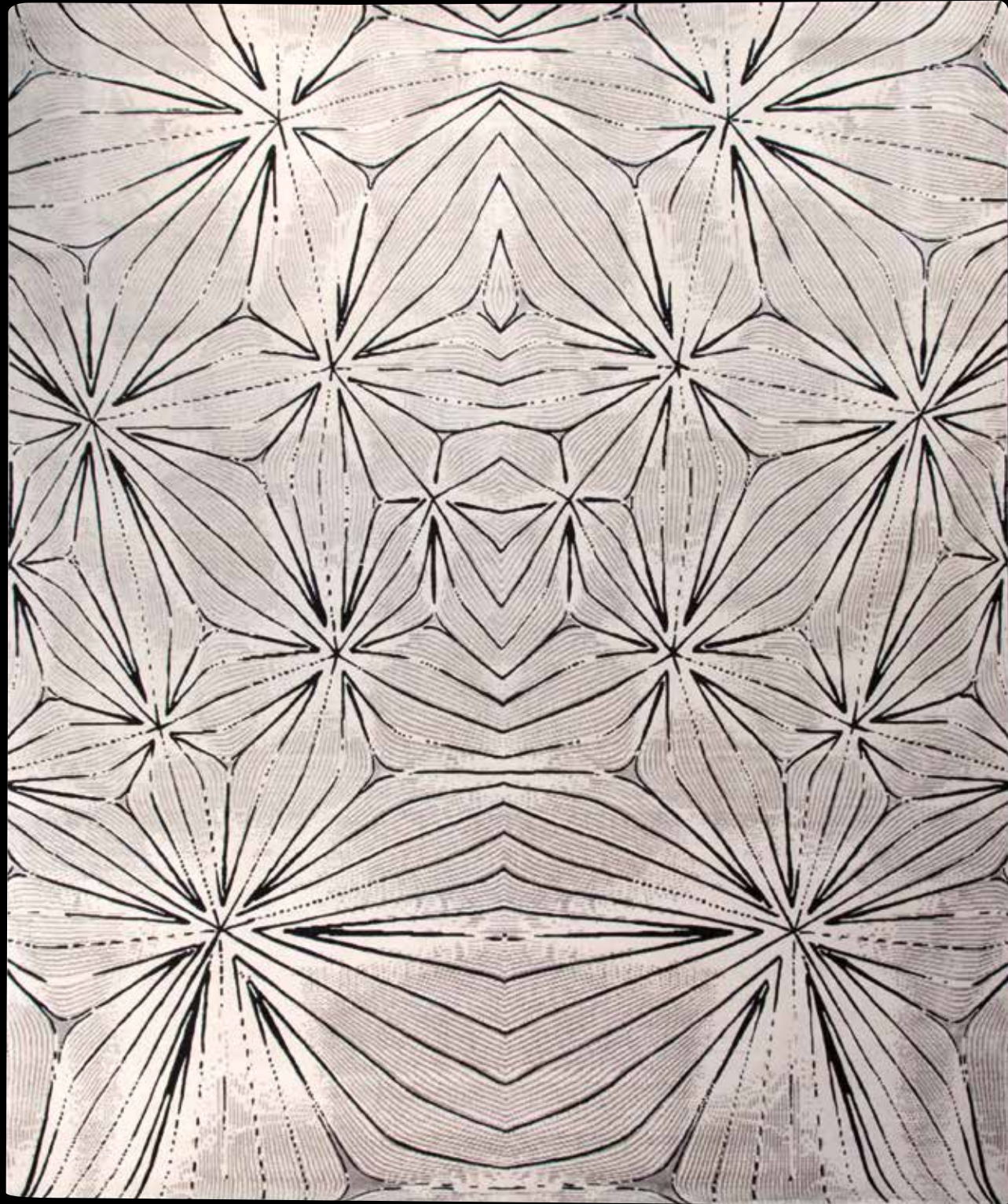


Design: Grid - Handknotted in wool and silk



Design: Dowels - Handknotted in loop wool and silk



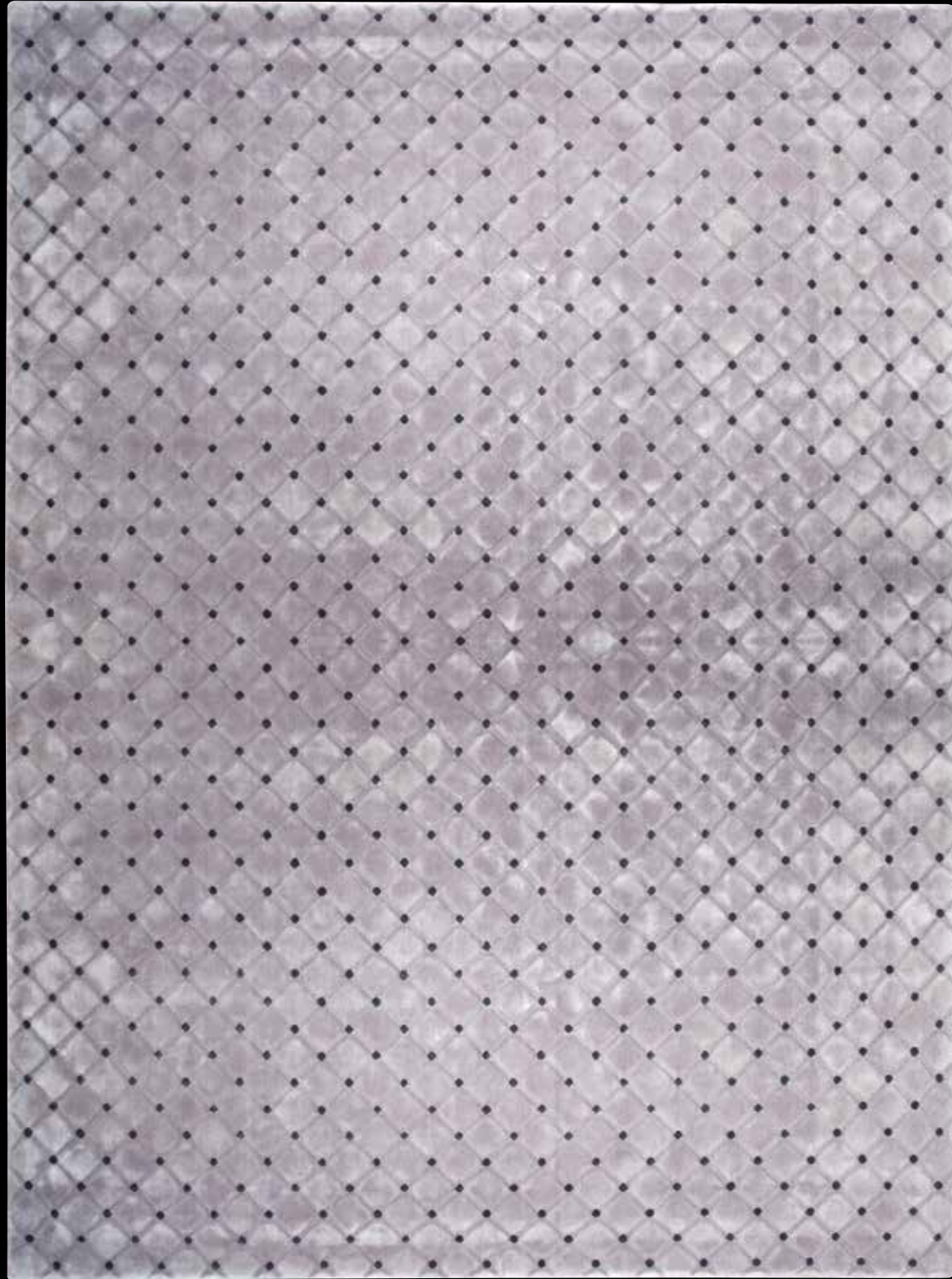


Design: Lilium - Handknotted in wool and silk



Design: Segment - Handknotted in wool and silk relief





Design: Velvet - Superior Handtufted in silk and wool relief







Design: Velvet





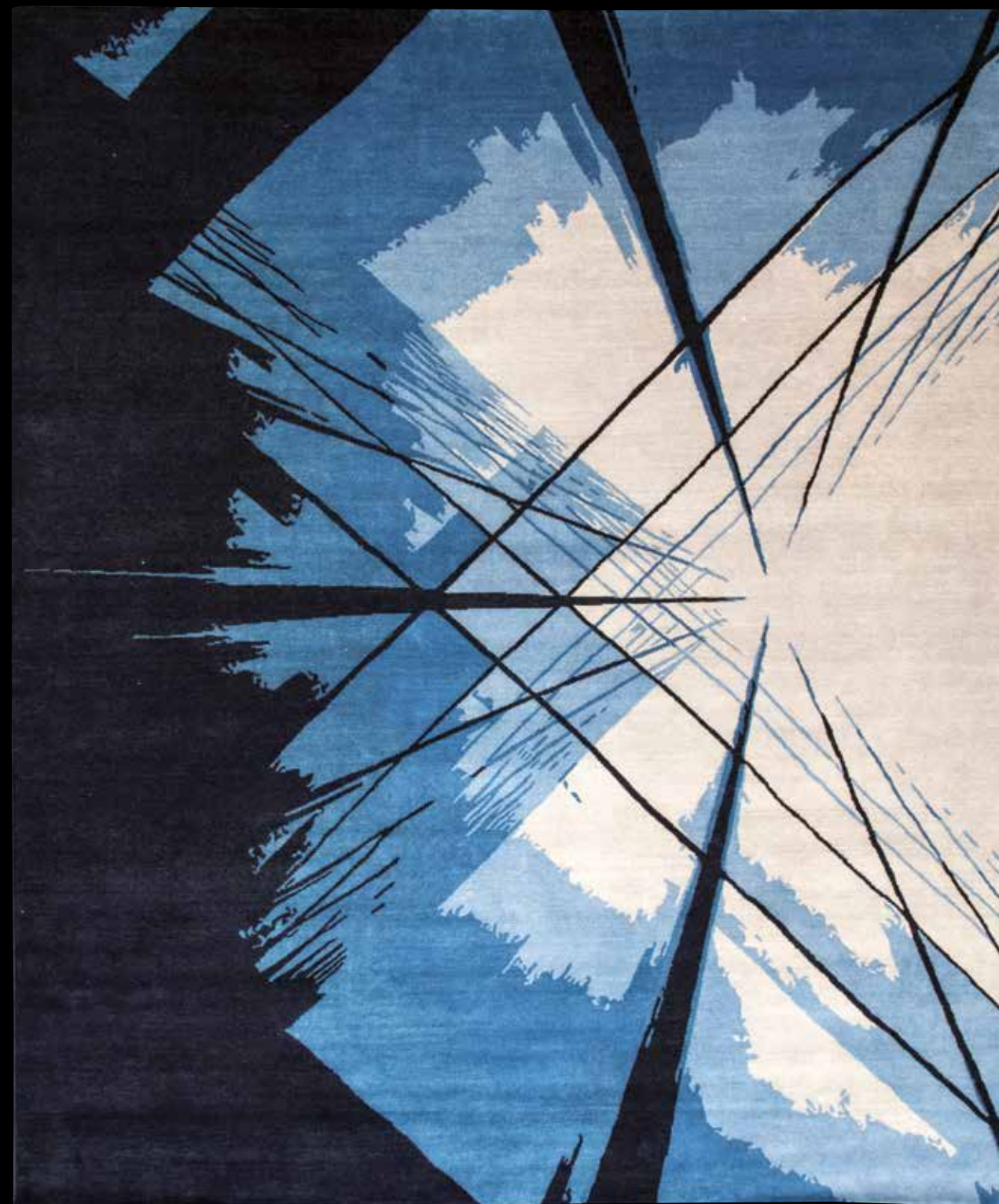
Design: Primrose - Handknotted in wool and silk relief







Design: Level - Handknotted in wool and silk relief



Design: Skyscraper - Handknotted in all wool

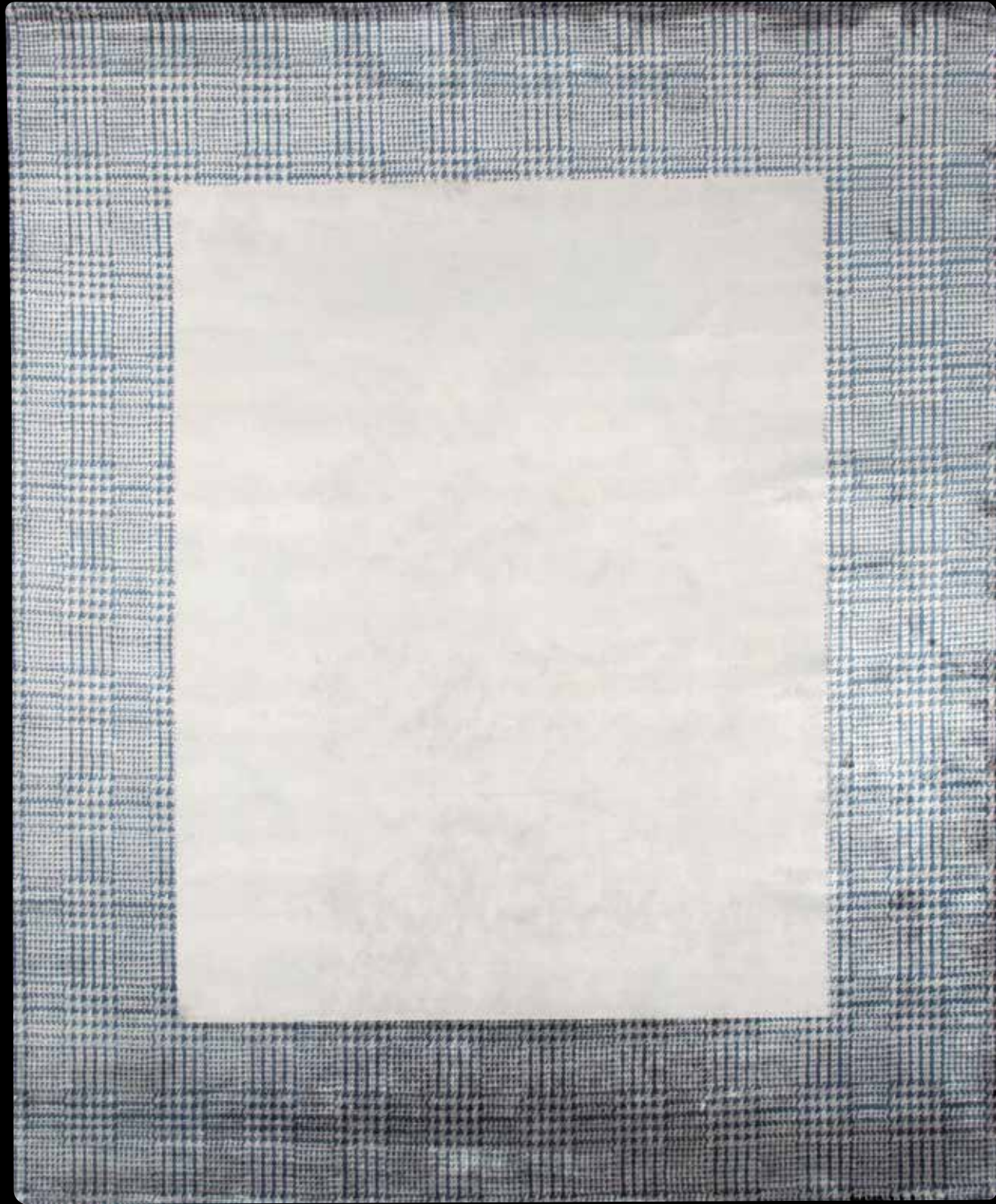




Design: Wales - Handknotted in silk and silk relief







Design: New Wales - Handknotted in all silk

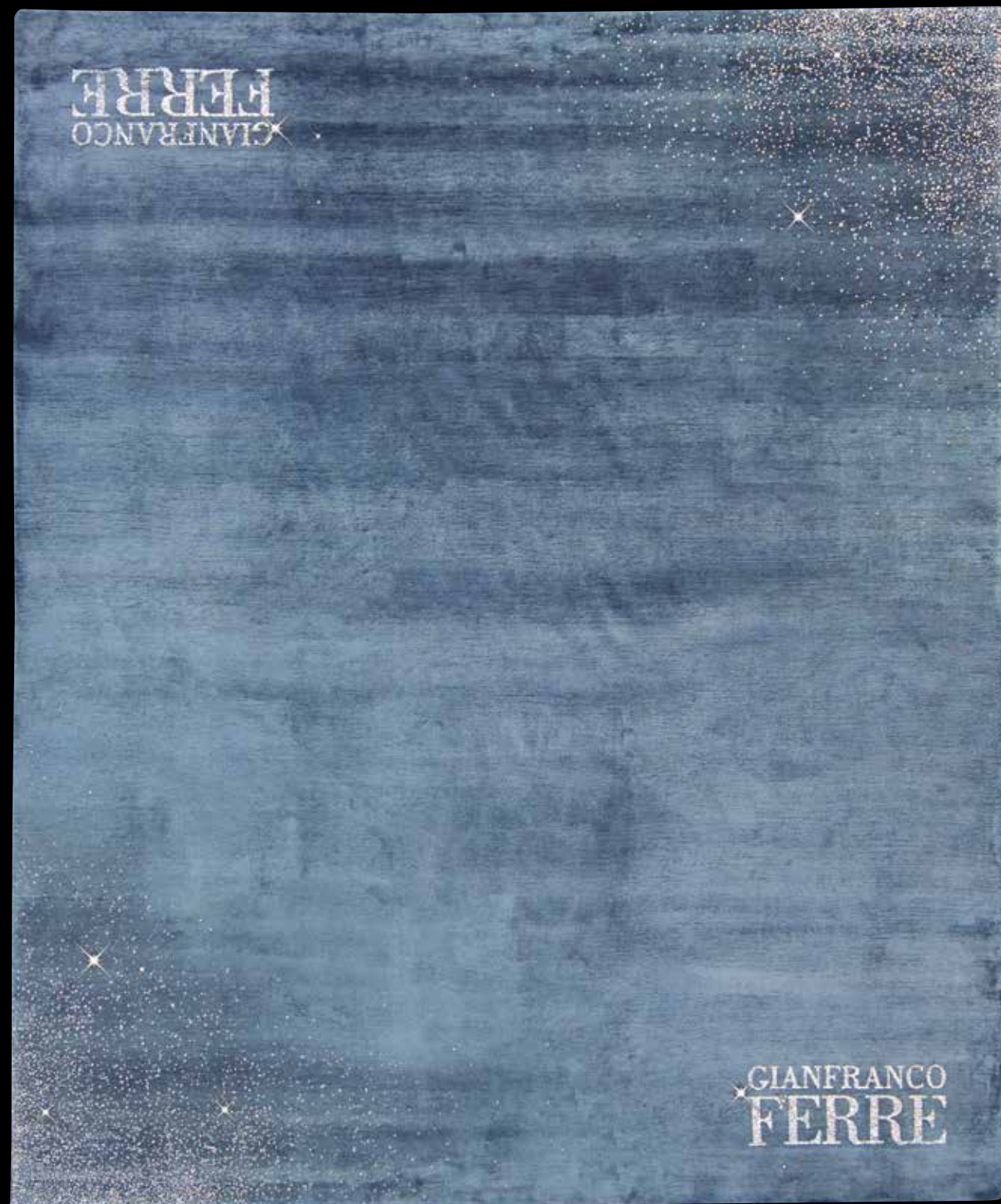


Design: Overlay - Handknotted in wool and silk relief









Design: Crystal - Handknotted in silk and Crystals from Swarovski®







Design: Drawing - Handknotted in wool and silk



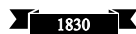


GIANFRANCO  
FERRE



**SAHRAI®**

M I L A N O



Gianfranco Ferré Official Licensee for Rugs

**MILANO**

Headquarters: Via A. Manzoni, 45 - Tel. +39 028690570 - [info@sahrai.com](mailto:info@sahrai.com)

**LONDON**

Flagship Store: 62-64 Brook Street, Mayfair - Tel. +44 (0)20 3887 4589 - [info@sahrai.com](mailto:info@sahrai.com)

[sahrai.com](http://sahrai.com)

Sahrai, all rights reserved. No reproduction, full or partial.